

## Recombinant Replication Protein A2 (RPA2) Antibody

Rabbit Monoclonal Antibody [Clone RPA2/9851R]

Catalog No	Format	Size
6118-RBM6-P0	Purified Ab with BSA and Azide at 200ug/ml	20 ug
6118-RBM6-P1	Purified Ab with BSA and Azide at 200ug/ml	100 ug
6118-RBM6-P1ABX	Purified Ab WITHOUT BSA or Azide at 1.0mg/ml	100 ug

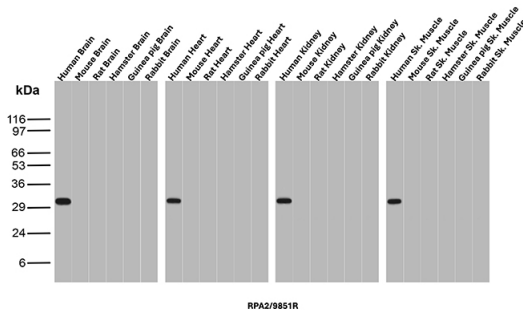
Applications	Tested Dillution	Note
Immunohistochemistry (IHC)	1-2ug/ml	30 min at RT. Staining of formalin-fixed tissues requires heating tissue sections in 10mM Tris with 1mM EDTA, pH 9.0, for 45 min at 95°C followed by cooling at RT for 20 minutes
Western Blot (WB)	2-4ug/ml	

### Product Details

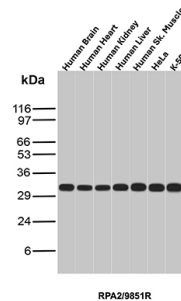
<b>Clone</b>	RPA2/9851R
<b>Immunogen</b>	Recombinant full-length human Replication Protein A2 (RPA2) protein
<b>Host</b>	Rabbit
<b>Clonality</b>	Monoclonal
<b>Isotype / Light Chain</b>	IgG / Kappa
<b>Mol. Weight of Antigen</b>	29.25kDa
<b>Cellular Localization</b>	Nucleus, PML body
<b>Species Reactivity</b>	Human
<b>Positive Control</b>	Human Brain, Human Heart, Human Kidney, Human Liver, Human Skeletal muscle, HeLa and K-562

\*Optimal dilution for a specific application should be determined.

### Product Images for Recombinant Replication Protein A2 (RPA2) Antibody



Western blot analysis of Brain, Heart, Kidney and Skeletal muscle tissues of different species using Replication Protein A2 Rabbit Monoclonal Antibody (RPA2/9851R).



Western blot analysis of Human Brain, Human Heart, Human Kidney, Human Liver, Human Skeletal muscle, HeLa and K-562 lysates using Replication Protein A2 Rabbit Monoclonal Antibody (RPA2/9851R).

### Specificity & Comments

Recognizes a protein of 34kDa, identified as a subunit of Replication Protein A (RPA) (also known as human single-stranded DNA binding protein, or HSSB). RPA from human cells is a stable heterotrimer of 70kDa, 32-34kDa, and 11-14kDa subunits (RPA70, RPA32, and RPA14 respectively). It is involved in DNA replication, repair, and recombination. RPA is required for the SV40 large tumor antigen-catalyzed unwinding of SV40 DNA and stimulates DNA polymerase (pol) alpha and delta. RPA34 is phosphorylated at the G1/S boundary of the cell cycle or upon exposure of cells to DNA damage-inducing agents including ionizing and UV radiation.

### Supplied As

200ug/ml of Ab produced in a mammalian-based expression system. Prepared in 10mM PBS with 0.05% BSA & 0.05% azide. Also available WITHOUT BSA & azide at 1.0mg/ml.

### Storage and Stability

Antibody with azide - store at 2 to 8 °C. Antibody without azide - store at -20 to -80 °C. Antibody is stable for 24 months. Non-hazardous. No MSDS required.

## Limitations and Warranty

This antibody is available for research use only and is not approved for use in diagnosis. There are no warranties, expressed or implied, which extend beyond this description. Company is not liable for any personal injury or economic loss resulting from this product.

---