

Recombinant CD79a (B-Cell Marker) Antibody

Rabbit Monoclonal Antibody [Clone IGA/7267R]

Catalog No	Format	Size
973-RBM17-P0	Purified Ab with BSA and Azide at 200ug/ml	20 ug
973-RBM17-P1	Purified Ab with BSA and Azide at 200ug/ml	100 ug
973-RBM17-P1ABX	Purified Ab WITHOUT BSA or Azide at 1.0mg/ml	100 ug

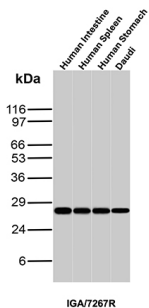
Applications	Tested Dillution	Note
Immunohistochemistry (IHC)	1-2ug/ml	30 min at RT. Staining of formalin-fixed tissues requires heating tissue sections in 10mM Tris with 1mM EDTA, pH 9.0, for 45 min at 95°C followed by cooling at RT for 20 minutes
Western Blot (WB)	2-4ug/ml	

Product Details

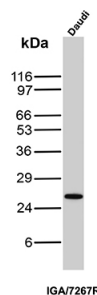
Clone	IGA/7267R
Immunogen	Recombinant fragment (around aa74-91) of the human CD79a protein (exact sequence is proprietary)
Host	Rabbit
Clonality	Monoclonal
Isotype / Light Chain	IgG / Kappa
Mol. Weight of Antigen	25.04kDa
Cellular Localization	Cell membrane
Species Reactivity	Human
Positive Control	Daudi or Ramos cells. Germinal center B-cells in a lymph node or tonsil. Intestine, Spleen, Stomach.

*Optimal dilution for a specific application should be determined.

Product Images for Recombinant CD79a (B-Cell Marker) Antibody



Western Blot analysis of Human Intestine, Human Spleen, Human Stomach and Daudi lysates using CD79a Recombinant Rabbit Monoclonal Antibody (IGA/7267R).



Western Blot analysis of Daudi cell lysate using CD79a Recombinant Rabbit Monoclonal Antibody (IGA/7267R).

Specificity & Comments

A disulphide-linked heterodimer, consisting of mb-1 (or CD79a) and B29 (or CD79b) polypeptides, is non-covalently associated with membrane-bound immunoglobulins on B cells. This complex of mb-1 and B29 polypeptides and immunoglobulin constitute the B cell Ag receptor. CD79a first appears at pre B cell stage, early in maturation, and persists until the plasma cell stage where it is found as an intracellular component. CD79a is found in the majority of acute leukemias of precursor B cell type, in B cell lines, B cell lymphomas, and in some myelomas. It is not present in myeloid or T cell lines. Anti-CD79a is generally used to complement anti-CD20 especially for mature B-cell lymphomas after treatment with Rituximab (anti-CD20). This antibody will stain many of the same lymphomas as anti-CD20, but also is more likely to stain B-lymphoblastic lymphoma/leukemia than is anti-CD20. Anti-CD79a also stains more cases of plasma cell myeloma and occasionally some types of endothelial cells as well.

Limitations and Warranty

This antibody is available for research use only and is not approved for use in diagnosis. There are no warranties, expressed or implied, which extend beyond this description. Company is not liable for any personal injury or economic loss resulting from this product.

Supplied As

200ug/ml of Ab produced in a mammalian-based expression system. Prepared in 10mM PBS with 0.05% BSA & 0.05% azide. Also available WITHOUT BSA & azide at 1.0mg/ml.

Storage and Stability

Antibody with azide - store at 2 to 8 °C. Antibody without azide - store at -20 to -80 °C. Antibody is stable for 24 months. Non-hazardous. No MSDS required.
