

Recombinant Glutathione S-Transferase Pi1 (GSTP1) Antibody

Rabbit Monoclonal Antibody [Clone GSTP1/12956R]

Catalog No	Format	Size
2950-RBM2-P0	Purified Ab with BSA and Azide at 200ug/ml	20 ug
2950-RBM2-P1	Purified Ab with BSA and Azide at 200ug/ml	100 ug
2950-RBM2-P1ABX	Purified Ab WITHOUT BSA and Azide at 1.0mg/ml	100 ug

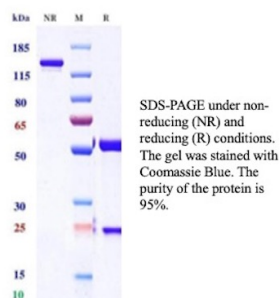
Applications	Tested Dillution	Note
Immunohistochemistry (IHC)	1-2ug/ml	30 min at RT. Staining of formalin-fixed tissues requires heating tissue sections in 10mM Tris with 1mM EDTA, pH 9.0, for 45 min at 95°C followed by cooling at RT for 20 minutes
Western Blot (WB)	2-4ug/ml	

Product Details

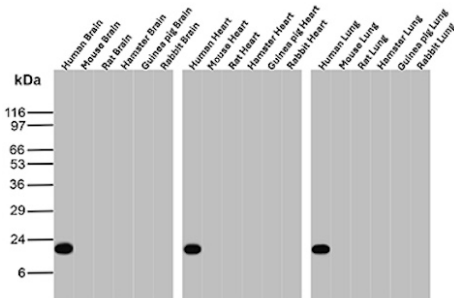
Clone	GSTP1/12956R
Gene Name	GSTP1
Immunogen	Recombinant fragment (around aa19-206) of human full-length GSTP1 protein (exact sequence is proprietary)
Host	Rabbit
Clonality	Monoclonal
Isotype / Light Chain	IgG / Kappa
Mol. Weight of Antigen	23kDa
Cellular Localization	Cytoplasm, Mitochondrion, Nucleus
Species Reactivity	Human
Positive Control	Human brain, lung, placenta or liver.

*Optimal dilution for a specific application should be determined.

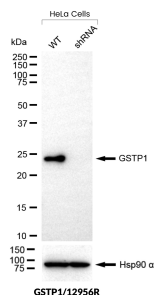
Product Images for Recombinant Glutathione S-Transferase Pi1 (GSTP1) Antibody



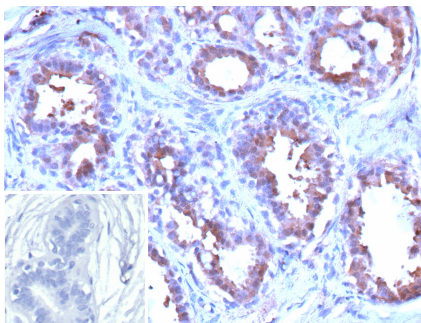
SDS-PAGE Analysis of Purified Glutathione S-transferase pi 1 Recombinant Rabbit Monoclonal Antibody (GSTP1/12956R). Confirmation of Purity and Integrity of Antibody.



Western Blot Analysis of Human Brain, Mouse Brain, Rat Brain, Hamster Brain, Guinea pig Brain, Rabbit Brain, Human Heart, Mouse Heart, Rat Heart, Hamster Heart, Guinea pig Heart, Rabbit Heart, Human Lung, Mouse Lung, Rat Lung, Hamster Lung, Guinea pig Lung and Rabbit Lung tissue lysates using GSTP1 Recombinant Rabbit Monoclonal Antibody (GSTP1/12956R).



Western Blot validation of anti-GSTP1 antibody. GSTP1 protein expression was compared in wild-type (WT) and GSTP1 shRNA Knockdown (KD) HeLa cells (30ug of total protein). Loading control is shown below.



Formalin-fixed, paraffin-embedded human breast carcinoma stained with Glutathione S-transferase pi 1 Recombinant Rabbit Monoclonal Antibody (GSTP1/12956R). Inset: PBS instead of primary antibody; secondary only negative control.

Specificity & Comments

Glutathione S-transferases (GSTs) function in the metabolic detoxification of various environmental carcinogens and lipid hydroperoxides. In response to oxidative stress, upregulation of the GST family member GSTP1 occurs, consistent with this function. Furthermore, the GSTP1 gene is subject to CpG island hyper-methylation, a state that correlates with human prostatic carcinogenesis. GSTP1 gene hyper-methylation can be detected in urine, ejaculate and plasma from men with prostate cancer, potentially making GSTP1 a useful biomarker for prostate cancer screening.

Supplied As

200ug/ml of Ab produced in CHO cell mammalian-based expression system. Prepared in 10mM PBS with 0.05% BSA & 0.05% azide. Also available WITHOUT BSA & azide at 1.0mg/ml.

Storage and Stability

Antibody with azide - store at 2 to 8°C. Antibody without azide - store at -20 to -80°C. Antibody is stable for 24 months. Non-hazardous. No MSDS required.

Research Areas

Cancer, Metabolism

Limitations and Warranty

This antibody is available for research use only and is not approved for use in diagnosis. There are no warranties, expressed or implied, which extend beyond this description. Company is not liable for any personal injury or economic loss resulting from this product.