

Recombinant Actin, Smooth Muscle (Leiomyosarcoma Marker) Antibody

Rabbit Monoclonal Antibody [Clone ACTA2/13673R]

Catalog No	Format	Size
59-RBM7-P0	Purified Ab with BSA and Azide at 200ug/ml	20 ug
59-RBM7-P1	Purified Ab with BSA and Azide at 200ug/ml	100 ug
59-RBM7-P1ABX	Purified Ab WITHOUT BSA and Azide at 1.0mg/ml	100 ug

Applications	Tested Dillution	Note
Immunohistochemistry (IHC)	1-2ug/ml	30 min at RT. Staining of formalin-fixed tissues requires heating tissue sections in 10mM Tris with 1mM EDTA, pH 9.0, for 45 min at 95°C followed by cooling at RT for 20 minutes
Western Blot (WB)	2-4ug/ml	

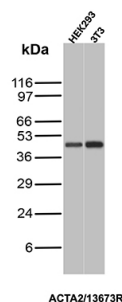
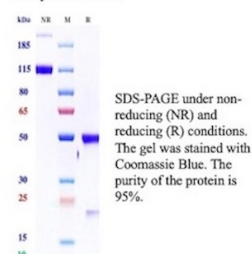
Product Details

Clone	ACTA2/13673R
Gene Name	ACTA2
Immunogen	Recombinant fragment (around aa2-124) of human ACTA2 protein (exact sequence is proprietary)
Host	Rabbit
Clonality	Monoclonal
Isotype / Light Chain	IgG / Kappa
Mol. Weight of Antigen	42kDa
Cellular Localization	Cytoplasm, Cytoskeleton
Species Reactivity	Human
Positive Control	Human kidney, skeletal muscle, uterus or leiomyosarcoma. HEK293, 3T3.

**Optimal dilution for a specific application should be determined.*

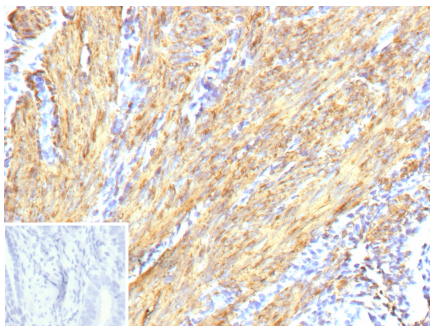
Product Images for Recombinant Actin, Smooth Muscle (Leiomyosarcoma Marker) Antibody

Purity: SDS-PAGE



SDS-PAGE Analysis of Purified Smooth Muscle Actin Recombinant Rabbit Monoclonal Antibody (ACTA2/13673R). Confirmation of Purity and Integrity of Antibody.

Western Blot Analysis of HEK293 and 3T3 cell lysates using Actin Recombinant Rabbit Monoclonal Antibody (ACTA2/13673R).



Formalin-fixed, paraffin-embedded human cervix stained with Smooth Muscle Actin Recombinant Rabbit Monoclonal Antibody (ACTA2/13673R). Inset: PBS instead of primary antibody; secondary only negative control.

Specificity & Comments

Actin is a major component of the cytoskeleton and is present in most cell types. It is highly specific to actin from smooth muscles. This MAb does not stain cardiac or skeletal muscle; however, it does stain myofibroblasts and myoepithelial cells. This antibody could be used together with anti-muscle specific actin and myogenin in making a diagnosis of smooth muscle and skeletal muscle tumors. In most cases of rhabdomyosarcoma, this antibody yields negative results whereas anti-muscle specific actin and myogenin are positive. Leiomyosarcomas are positive only with anti-muscle specific actin and anti-smooth muscle actin and are negative with anti-myogenin.

Supplied As

200ug/ml of Ab produced in CHO cell mammalian-based expression system. Prepared in 10mM PBS with 0.05% BSA & 0.05% azide. Also available WITHOUT BSA & azide at 1.0mg/ml.

Storage and Stability

Antibody with azide - store at 2 to 8 °C. Antibody without azide - store at -20 to -80 °C. Antibody is stable for 24 months. Non-hazardous. No MSDS required.

Research Areas

Cardiovascular, Mesenchymal Stem Cell Differentiation, Signal Transduction

Limitations and Warranty

This antibody is available for research use only and is not approved for use in diagnosis. There are no warranties, expressed or implied, which extend beyond this description. Company is not liable for any personal injury or economic loss resulting from this product.