

Recombinant NKX2.8 Antibody

Rabbit Monoclonal Antibody [Clone NKX28/3138R]

Catalog No	Format	Size
26257-RBM6-P0	Purified Ab with BSA and Azide at 200ug/ml	20 ug
26257-RBM6-P1	Purified Ab with BSA and Azide at 200ug/ml	100 ug
26257-RBM6-P1ABX	Purified Ab WITHOUT BSA or Azide at 1.0mg/ml	100 ug

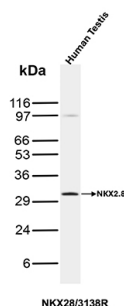
Applications	Tested Dillution	Note
Immunohistochemistry (IHC)	1-2ug/ml	30 min at RT. Staining of formalin-fixed tissues requires heating tissue sections in 10mM Tris with 1mM EDTA, pH 9.0, for 45 min at 95°C followed by cooling at RT for 20 minutes
Western Blot (WB)	2-4ug/ml	

Product Details

Clone	NKX28/3138R
Immunogen	Recombinant fragment (around aa10-123) of the human NKX2.8 protein (exact sequence is proprietary)
Host	Rabbit
Clonality	Monoclonal
Isotype / Light Chain	IgG / Kappa
Mol. Weight of Antigen	25.87kDa
Cellular Localization	Nucleus
Species Reactivity	Human
Positive Control	Kidney or Thyroid tissue (IHC)., Testis. Human Liver

*Optimal dilution for a specific application should be determined.

Product Images for Recombinant NKX2.8 Antibody



Western Blot Analysis of Human Testis tissue lysate using NKX2.8 Recombinant Rabbit Monoclonal Antibody (NKX28/3138R).

Specificity & Comments

The protein encoded by this gene is a homeobox-containing developmental regulator associated with liver development. The encoded protein binds to the alpha-fetoprotein (AFP) gene promoter and increases the expression of AFP. This gene is overexpressed in some lung cancers and is linked to poor patient survival, possibly due to its resistance to cisplatin. This gene is aberrantly methylated in pancreatic cancer, deleted in squamous cell lung carcinomas, and acts as a tumor suppressor in esophageal cancer. Mutations in this gene may also be a cause of neural tube defects.

Limitations and Warranty

This antibody is available for research use only and is not approved for use in diagnosis. There are no warranties, expressed or implied, which extend beyond this description. Company is not liable for any personal injury or economic loss resulting from this product.

Supplied As

200ug/ml of Ab produced in a mammalian-based expression system. Prepared in 10mM PBS with 0.05% BSA & 0.05% azide. Also available WITHOUT BSA & azide at 1.0mg/ml.

Storage and Stability

Antibody with azide - store at 2 to 8 °C. Antibody without azide - store at -20 to -80 °C. Antibody is stable for 24 months. Non-hazardous. No MSDS required.