

## Recombinant E-Cadherin (CDH1) / CD324 (Intercellular Junction Marker) Antibody

Rabbit Monoclonal Antibody [Clone CDH1/13647R]

Catalog No	Format	Size
999-RBM44-P0	Purified Ab with BSA and Azide at 200ug/ml	20 ug
999-RBM44-P1	Purified Ab with BSA and Azide at 200ug/ml	100 ug
999-RBM44-P1ABX	Purified Ab WITHOUT BSA or Azide at 1.0mg/ml	100 ug

Applications	Tested Dillution	Note
Immunohistochemistry (IHC)	1-2ug/ml	30 min at RT. Staining of formalin-fixed tissues requires heating tissue sections in 10mM Tris with 1mM EDTA, pH 9.0, for 45 min at 95°C followed by cooling at RT for 20 minutes
Western Blot (WB)	2-4ug/ml	

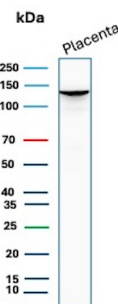
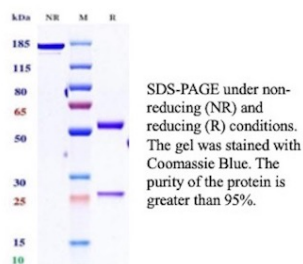
### Product Details

<b>Clone</b>	CDH1/13647R
<b>Immunogen</b>	Recombinant fragment (around aa757-778) of the human E-Cadherin (CDH1) protein (exact sequence is proprietary)
<b>Host</b>	Rabbit
<b>Clonality</b>	Monoclonal
<b>Isotype / Light Chain</b>	IgG / Kappa
<b>Mol. Weight of Antigen</b>	97.45kDa
<b>Cellular Localization</b>	Adherens junction, Cell junction, Cell membrane, Cytoplasm, Desmosome, Endosome, Golgi apparatus, trans-Golgi network
<b>Species Reactivity</b>	Human
<b>Positive Control</b>	Placenta, MCF-7 or SK-BR3 cells. Prostate or colon carcinomas.

\*Optimal dilution for a specific application should be determined.

### Product Images for Recombinant E-Cadherin (CDH1) / CD324 (Intercellular Junction Marker) Antibody

Purity: SDS-PAGE



SDS-PAGE Analysis of Purified E-Cadherin (CDH1) Recombinant Rabbit Monoclonal Antibody (CDH1/13647R). Confirmation of Purity and Integrity of Antibody.

Western Blot Analysis of human placenta tissue lysate using E-Cadherin Recombinant Rabbit Monoclonal Antibody (CDH1/13647R).

**Specificity & Comments**

E-cadherin is a transmembrane, calcium dependent cell adhesion protein that mediates cell to cell adhesion and maintains structural and functional integrity of epithelial tissues. It also has pivotal barrier functions and maintains the polarity of epithelial cells. Reduced or aberrant E-cadherin expression breaks cell to cell contacts, and thus, cells acquire the ability to migrate. In normal tissues, immunostaining of E-cadherin is localized to the membrane of epithelial cells, consistent with its role in cell adhesion. And in tumor tissues, E-cadherin stains positively in glandular epithelium as well as adenocarcinomas of the lung, gastrointestinal tract, and ovary. It has also been shown to be positive in some thyroid carcinomas. A combination of E-cadherin and p120 catenin may help distinguish ductal carcinoma of the breast from lobular carcinoma. And also, several studies have reported that reduced E-cadherin expression is correlated with poor prognosis in several types of carcinomas.

---

**Limitations and Warranty**

This antibody is available for research use only and is not approved for use in diagnosis. There are no warranties, expressed or implied, which extend beyond this description. Company is not liable for any personal injury or economic loss resulting from this product.

---

**Supplied As**

200ug/ml of Ab produced in a mammalian-based expression system. Prepared in 10mM PBS with 0.05% BSA & 0.05% azide. Also available WITHOUT BSA & azide at 1.0mg/ml.

---

**Storage and Stability**

Antibody with azide - store at 2 to 8 °C. Antibody without azide - store at -20 to -80 °C. Antibody is stable for 24 months. Non-hazardous. No MSDS required.

---