

Recombinant TACSTD2 / TROP2 (Epithelial Marker) Antibody

Mouse Monoclonal Antibody [Clone rTACSTD2/9326]

Catalog No	Format	Size
4070-MSM12-P0	Purified Ab with BSA and Azide at 200ug/ml	20 ug
4070-MSM12-P1	Purified Ab with BSA and Azide at 200ug/ml	100 ug
4070-MSM12-P1ABX	Purified Ab WITHOUT BSA or Azide at 1.0mg/ml	100 ug

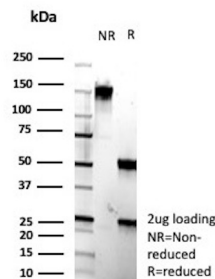
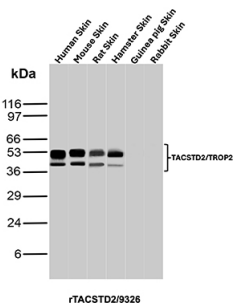
Applications	Tested Dillution	Note
Immunohistochemistry (IHC)	1-2ug/ml	30 min at RT. Staining of formalin-fixed tissues requires heating tissue sections in 10mM Tris with 1mM EDTA, pH 9.0, for 45 min at 95°C followed by cooling at RT for 20 minutes
Western Blot (WB)	2-4ug/ml	

Product Details

Clone	rTACSTD2/9326
Immunogen	Recombinant fragment (around aa31-274) of the human TACSTD2 protein (exact sequence is proprietary)
Host	Mouse
Clonality	Monoclonal
Isotype / Light Chain	IgG2b / Kappa
Mol. Weight of Antigen	35.71kDa
Cellular Localization	Membrane
Species Reactivity	Hamster, Human, Mouse, Rat
Positive Control	A-431, HT29 cells. Human Skin or breast or colon carcinoma.

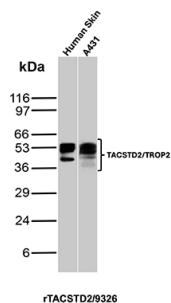
*Optimal dilution for a specific application should be determined.

Product Images for Recombinant TACSTD2 / TROP2 (Epithelial Marker) Antibody



Western blot analysis of Human skin, Mouse skin, Rat skin, Hamster skin, Guinea pig skin and Rabbit skin tissue lysates using TACSTD2 / TROP2 (Epithelial Marker) Recombinant Mouse Monoclonal Antibody (rTACSTD2/9326).

SDS-PAGE Analysis of Purified TROP2 Recombinant Mouse Monoclonal Antibody (rTACSTD2/9326). Confirmation of Purity and Integrity of Antibody.



Western blot analysis of Human skin and A-431 lysates using TACSTD2 / TROP2 (Epithelial Marker) Recombinant Mouse Monoclonal Antibody (rTACSTD2/9326).

Specificity & Comments

TACSTD2 is a cell surface glycoprotein receptor. It is a single pass type I membrane protein containing one thyroglobulin type-1 domain, an epidermal growth factor-like repeat, a phosphatidylinositol binding site and tyrosine phosphorylation sites near the C-terminus. It plays a role in transducing intracellular calcium signals. It is expressed in trophoblast cells, cornea and multi-stratified epithelia. It is also highly expressed in several types of tumors and is involved in regulating the growth of carcinoma cells.

Limitations and Warranty

This antibody is available for research use only and is not approved for use in diagnosis. There are no warranties, expressed or implied, which extend beyond this description. Company is not liable for any personal injury or economic loss resulting from this product.

Supplied As

200ug/ml of Ab produced in a mammalian-based expression system. Prepared in 10mM PBS with 0.05% BSA & 0.05% azide. Also available WITHOUT BSA & azide at 1.0mg/ml.

Storage and Stability

Antibody with azide - store at 2 to 8 °C. Antibody without azide - store at -20 to -80 °C. Antibody is stable for 24 months. Non-hazardous. No MSDS required.