

## Recombinant MUC4 (Mucin 4 / Gastric Mucin) Antibody

Rabbit Monoclonal Antibody [Clone MUC4/8660R]

Catalog No	Format	Size
4585-RBM8-P0	Purified Ab with BSA and Azide at 200ug/ml	20 ug
4585-RBM8-P1	Purified Ab with BSA and Azide at 200ug/ml	100 ug
4585-RBM8-P1ABX	Purified Ab WITHOUT BSA and Azide at 1.0mg/ml	100 ug

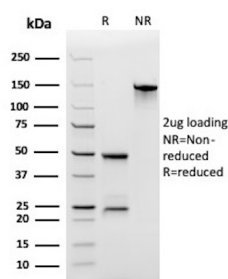
Applications	Tested Dillution	Note
Immunohistochemistry (IHC)	1-2ug/ml	30 min at RT. Staining of formalin-fixed tissues requires heating tissue sections in 10mM Tris with 1mM EDTA, pH 9.0, for 45 min at 95°C followed by cooling at RT for 20 minutes

### Product Details

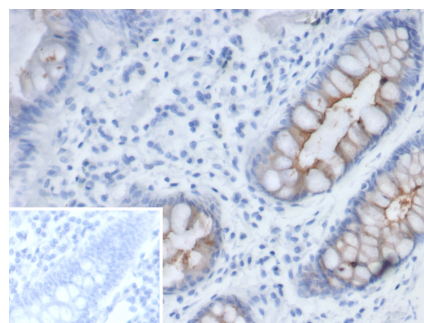
Clone	MUC4/8660R
Gene Name	MUC4
Immunogen	Recombinant fragment (around aa 1729-1860) of human MUC4 protein (exact sequence is proprietary)
Host	Rabbit
Clonality	Monoclonal
Isotype / Light Chain	IgG / Kappa
Mol. Weight of Antigen	235kDa
Cellular Localization	Cell membrane, Secreted
Species Reactivity	Human
Positive Control	Human stomach, colon or esophagus.

\*Optimal dilution for a specific application should be determined.

### Product Images for Recombinant MUC4 (Mucin 4 / Gastric Mucin) Antibody



SDS-PAGE Analysis of Purified Mucin 4 Recombinant Rabbit Monoclonal Antibody (MUC4/8660R). Confirmation of Purity and Integrity of Antibody.



Formalin-fixed, paraffin-embedded human colon stained with Mucin 4 Recombinant Rabbit Monoclonal Antibody (MUC4/8660R). Inset: PBS instead of primary antibody; secondary only negative control.

### Specificity & Comments

The major constituents of mucus, the viscous secretion that covers epithelial surfaces such as those in the trachea, colon, and cervix, are highly glycosylated proteins called mucins. These glycoproteins play important roles in the protection of the epithelial cells and have been implicated in epithelial renewal and differentiation. This gene encodes an integral membrane glycoprotein found on the cell surface, although secreted isoforms may exist. MUC-4 transcripts have been detected in normal respiratory epithelium and lung. MUC-4 is a very specific (100%) and sensitive (90%) marker of lung adenocarcinomas and is negative for mesotheliomas. Reportedly, MUC-4 expression in invasive ductal carcinoma of the pancreas is an independent factor for poor prognosis.

### Supplied As

200ug/ml of Ab produced in CHO cell mammalian-based expression system. Prepared in 10mM PBS with 0.05% BSA & 0.05% azide. Also available WITHOUT BSA & azide at 1.0mg/ml.

### Storage and Stability

Antibody with azide - store at 2 to 8°C. Antibody without azide - store at -20 to -80°C. Antibody is stable for 24 months. Non-hazardous. No MSDS required.

### Research Areas

Cardiovascular, Immunology, Infectious Disease

## Limitations and Warranty

This antibody is available for research use only and is not approved for use in diagnosis. There are no warranties, expressed or implied, which extend beyond this description. Company is not liable for any personal injury or economic loss resulting from this product.

---