

Recombinant IgD (Immunoglobulin Delta Heavy Chain) (B-Cell Marker) Antibody

Mouse Monoclonal Antibody [Clone rIGHD/3602]

Catalog No	Format	Size
3495-MSM3-P0	Purified Ab with BSA and Azide at 200ug/ml	20 ug
3495-MSM3-P1	Purified Ab with BSA and Azide at 200ug/ml	100 ug
3495-MSM3-P1ABX	Purified Ab WITHOUT BSA or Azide at 1.0mg/ml	100 ug

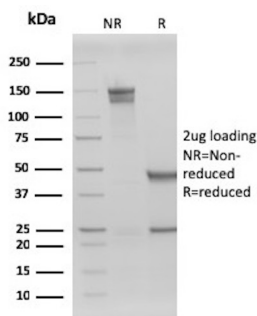
Applications	Tested Dillution	Note
Immunohistochemistry (IHC)	1-2ug/ml	30 min at RT. Staining of formalin-fixed tissues requires heating tissue sections in 10mM Tris with 1mM EDTA, pH 9.0, for 45 min at 95°C followed by cooling at RT for 20 minutes
Western Blot (WB)	2-4ug/ml	

Product Details

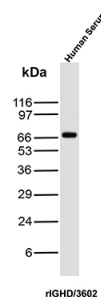
Clone	rIGHD/3602
Immunogen	Recombinant full-length human IgD Immunoglobulin protein
Host	Mouse
Clonality	Monoclonal
Isotype / Light Chain	IgG1 / Kappa
Species Reactivity	Human
Positive Control	Human tonsil lysate; NAMALWA cell lysate; Human tonsil and lymphoid tissues, Human Serum

*Optimal dilution for a specific application should be determined.

Product Images for Recombinant IgD (Immunoglobulin Delta Heavy Chain) (B-Cell Marker) Antibody



SDS-PAGE Analysis of Purified rIGHD Recombinant Mouse Monoclonal Antibody (rIGHD/3602). Confirmation of Purity and Integrity of Antibody.



Western Blot Analysis of Human Serum lysate using IgD Mouse Recombinant Monoclonal Antibody (rIGHD/3602)

Specificity & Comments

Immunoglobulins are four-chain, Y-shaped, monomeric structures comprised of two identical heavy chains and two identical light chains held together through interchain disulfide bonds. The chains form two domains, the Fab (antigen binding) fragment and the Fc (constant) fragment. Immunoglobulin D (IgD) exists as a monomer with γ heavy chains and either δ or ϵ light chains. It plays a biological role as a transmembrane receptor molecule, co-expressed with IgM on the surface of mature/naive B cells. In particular, it is found on spleen B cell surfaces. Compared to IgM, IgD exists in much lower numbers and is not expressed on immature B cells. IgD surface expression on B cells is regulated in part by IL-27. In mice, the inhibition of this immunoglobulin isotype does not cause a significant change to the immune system.

Supplied As

200ug/ml of Ab produced in a mammalian-based expression system. Prepared in 10mM PBS with 0.05% BSA & 0.05% azide. Also available WITHOUT BSA & azide at 1.0mg/ml.

Storage and Stability

Antibody with azide - store at 2 to 8 °C. Antibody without azide - store at -20 to -80 °C. Antibody is stable for 24 months. Non-hazardous. No MSDS required.

Limitations and Warranty

This antibody is available for research use only and is not approved for use in diagnosis. There are no warranties, expressed or implied, which extend beyond this description. Company is not liable for any personal injury or economic loss resulting from this product.
