

pS2 / pNR-2 / TFF1 (Estrogen-Regulated Protein) Antibody

Mouse Monoclonal Antibody [Clone MSVA-482M]

Catalog No	Format	Size
7031-MSM18-P0	Purified Ab with BSA and Azide	20 ug
7031-MSM18-P1	Purified Ab with BSA and Azide	100 ug

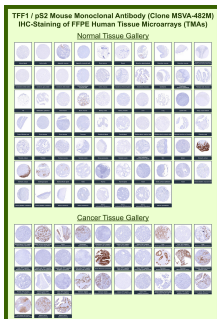
Applications	Tested Dillution	Note
Immunohistochemistry (IHC)	1:100-1:200	Manual Protocol: Freshly cut sections should be used (less than 10 days between cutting and staining). Heat-induced antigen retrieval for 5 minutes in an autoclave at 121°C in pH 7.8 Target Retrieval Solution buffer. Apply the antibody at a dilution of 1:100 at 37°C for 60 minutes. Visualization of bound antibody by the EnVision Kit (Dako, Agilent) according to the manufacturer's directions.

Product Details

Clone	MSVA-482M
Immunogen	Recombinant fragment (around aa1-84) of human TFF1 protein (exact sequence is proprietary)
Host	Mouse
Clonality	Monoclonal
Isotype / Light Chain	IgG2a / Kappa
Mol. Weight of Antigen	6.5kDa
Cellular Localization	Cytoplasm
Species Reactivity	Human
Positive Control	Stomach: A strong cytoplasmic TFF1 staining should be seen in the gastric surface epithelium.

*Optimal dilution for a specific application should be determined.

Product Images for pS2 / pNR-2 / TFF1 (Estrogen-Regulated Protein) Antibody



Trefoil factor 1 Mouse Monoclonal Antibody (MSVA-482M) tested on many normal and cancer tissues. The immunohistochemistry staining in these tissues aligns with the expression data in Human Protein Atlas.

Specificity & Comments

It recognizes a polypeptide of 6.5kDa, identified as pS2 estrogen-regulated protein. Its epitope is located in the c-terminus of human pS2 protein. pS2 is a trefoil peptide. Trefoil peptides are protease resistant molecules secreted throughout the gut that play a role in mucosal healing. These peptides contain three intra-chain disulfide bonds, forming the trefoil motif, or P-domain. pS2 is known to form dimers and this dimerization is thought to play a role in its protective and healing properties. About 60% of breast carcinomas are positive for pS2. Staining is cytoplasmic, often with localization to the Golgi apparatus. pS2 is shown to be localized in normal stomach mucosa, gastric fluid, goblet cells in the colon and small intestine, and in ulcerations of the gastrointestinal tract. Several studies have shown that pS2 is primarily expressed in estrogen receptor-positive breast tumors and it may define a subset of estrogen-dependent tumors that displays an increased likelihood of response to endocrine therapy.

Limitations and Warranty

This antibody is available for research use only and is not approved for use in diagnosis. There are no warranties, expressed or implied, which extend beyond this description. Company is not liable for any personal injury or economic loss resulting from this product.

Supplied As

Ab produced in CHO cell mammalian-based expression system. Prepared in 10mM PBS with 0.05% BSA & 0.05% azide. Also available WITHOUT BSA & azide.

Storage and Stability

Antibody with azide - store at 2 to 8°C. Antibody without azide - store at -20 to -80°C. Antibody is stable for 24 months. Non-hazardous. No MSDS required.

Research Areas

Signal Transduction
