

Recombinant S100P Antibody

Rabbit Monoclonal Antibody [Clone MSVA-480R]

Catalog No	Format	Size
6286-RBM12-P0	Purified Ab with BSA and Azide	20 ug
6286-RBM12-P1	Purified Ab with BSA and Azide	100 ug

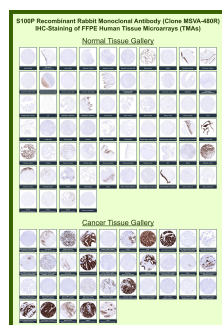
Applications	Tested Dillution	Note
Immunohistochemistry (IHC)	1:100-1:200	Manual Protocol: Freshly cut sections should be used (less than 10 days between cutting and staining). Heat-induced antigen retrieval for 5 minutes in an autoclave at 121°C in pH 7.8 Target Retrieval Solution buffer. Apply the antibody at a dilution of 1:150 at 37°C for 60 minutes. Visualization of bound antibody by the EnVision Kit (Dako, Agilent) according to the manufacturer's directions.

Product Details

Clone	MSVA-480R
Immunogen	Recombinant fragment corresponding to C-terminal of human S100P protein
Host	Rabbit
Clonality	Monoclonal
Isotype / Light Chain	IgG / Kappa
Mol. Weight of Antigen	10kDa
Cellular Localization	Cell projection, Cytoplasm, Microvillus membrane, Nucleus
Species Reactivity	Human
Positive Control	Urinary bladder: A strong S100P immunostaining should be seen in the urothelium but not in the stroma or muscular cells.

**Optimal dilution for a specific application should be determined.*

Product Images for Recombinant S100P Antibody



Protein S100-P Rabbit Recombinant Monoclonal Antibody (MSVA-480R) tested on many normal and cancer tissues. The immunohistochemistry staining in these tissues aligns with the expression data in Human Protein Atlas.

Specificity & Comments

S100P is a 95-amino-acid protein and a member of the S100 family. S100P has been shown to mediate tumor growth, metastasis and invasion through the binding of Ca²⁺ ions, receptor for advanced glycation end products, cytoskeletal protein ezrin, calcyclin-binding protein/Siah-1-interacting protein and cathepsin D. S100P highly expressed in human placenta, gastrointestinal tract, and esophageal mucosa, but always negative in pancreas and liver. Overexpression of S100P has been detected in several cancers such as breast, colon, prostate, pancreatic and lung carcinomas, and the protein has been functionally implicated in carcinogenic processes. S100P could potentially serve as diagnostic marker, prognostic/predictive indicator and therapy target for different carcinomas.

Supplied As

Ab produced in HEK293 cell mammalian-based expression system. Prepared in 10mM PBS with 0.05% BSA & 0.05% azide. Also available WITHOUT BSA & azide.

Storage and Stability

Antibody with azide - store at 2 to 8 °C. Antibody without azide - store at -20 to -80 °C. Antibody is stable for 24 months. Non-hazardous. No MSDS required.

Research Areas

Immunology, Nuclear Marker

Limitations and Warranty

This antibody is available for research use only and is not approved for use in diagnosis. There are no warranties, expressed or implied, which extend beyond this description. Company is not liable for any personal injury or economic loss resulting from this product.
