

## Recombinant Prostate Specific Acid Phosphatase (PSAP) Antibody

Mouse Monoclonal Antibody [Clone MSVA-452M]

Catalog No	Format	Size
55-MSM9-P0	Purified Ab with BSA and Azide	20 ug
55-MSM9-P1	Purified Ab with BSA and Azide	100 ug

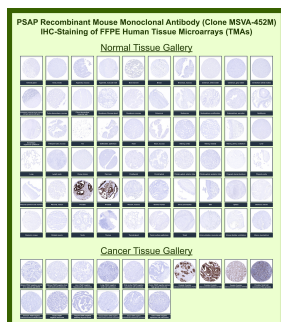
Applications	Tested Dillution	Note
Immunohistochemistry (IHC)	1:100-1:200	Manual Protocol: Freshly cut sections should be used (less than 10 days between cutting and staining). Heat-induced antigen retrieval for 5 minutes in an autoclave at 121°C in pH 7.8 Target Retrieval Solution buffer. Apply the antibody at a dilution of 1:150 at 37°C for 60 minutes. Visualization of bound antibody by the EnVision Kit (Dako, Agilent) according to the manufacturer's directions.

### Product Details

<b>Clone</b>	MSVA-452M
<b>Immunogen</b>	Recombinant full-length human ACPP protein
<b>Host</b>	Mouse
<b>Clonality</b>	Monoclonal
<b>Isotype / Light Chain</b>	IgG1 / Kappa
<b>Mol. Weight of Antigen</b>	52kDa
<b>Cellular Localization</b>	Cell membrane, Cytoplasm, Cytosol, Lysosome membrane, Nucleus, Secreted
<b>Species Reactivity</b>	Human
<b>Positive Control</b>	Prostate: A strong PSAP immunostaining should, be seen in all glandular cells.

\*Optimal dilution for a specific application should be determined.

### Product Images for Recombinant Prostate Specific Acid Phosphatase (PSAP) Antibody



Prostatic acid phosphatase Mouse Recombinant Monoclonal Antibody (MSVA-452M) tested on many normal and cancer tissues. The immunohistochemistry staining in these tissues aligns with the expression data in Human Protein Atlas.

### Specificity & Comments

Recognizes a protein of 52kDa, identified as prostate specific acid phosphatase (PSAP). This enzyme catalyzes the conversion of orthophosphoric monoester to alcohol and orthophosphate. It is synthesized under androgen regulation and is secreted by the epithelial cells of the prostate gland. PSAP is found in non-neoplastic adult and fetal prostatic glands, primary and metastatic prostatic carcinomas. It shows no staining in granulocytes, osteoclasts, parietal cells of the stomach, liver cells, renal cell or breast carcinomas.

### Supplied As

Ab produced in CHO cell mammalian-based expression system. Prepared in 10mM PBS with 0.05% BSA & 0.05% azide. Also available WITHOUT BSA & azide.

### Storage and Stability

Antibody with azide - store at 2 to 8°C. Antibody without azide - store at -20 to -80°C. Antibody is stable for 24 months. Non-hazardous. No MSDS required.

### Research Areas

Immunology, Prostate Cancer

## Limitations and Warranty

This antibody is available for research use only and is not approved for use in diagnosis. There are no warranties, expressed or implied, which extend beyond this description. Company is not liable for any personal injury or economic loss resulting from this product.

---