

Recombinant Cytokeratin 19 (KRT19) (Pancreatic Stem Cell Marker) Antibody

Mouse Monoclonal Antibody [Clone MSVA-119M]

Catalog No	Format	Size
3880-MSM23-P0	Purified Ab with BSA and Azide	20 ug
3880-MSM23-P1	Purified Ab with BSA and Azide	100 ug

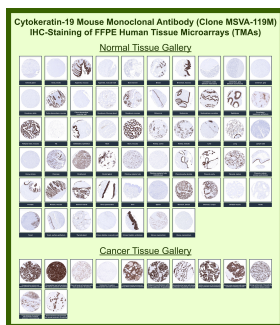
Applications	Tested Dillution	Note
Immunohistochemistry (IHC)	1:100-1:200	Manual Protocol: Freshly cut sections should be used (less than 10 days between cutting and staining). Heat-induced antigen retrieval for 5 minutes in an autoclave at 121°C in pH 7.8 Target Retrieval Solution buffer. Apply the antibody at a dilution of 1:150 at 37°C for 60 minutes. Visualization of bound antibody by the EnVision Kit (Dako, Agilent) according to the manufacturer's directions.

Product Details

Clone	MSVA-119M
Immunogen	Recombinant full-length human KRT19 protein
Host	Mouse
Clonality	Monoclonal
Isotype / Light Chain	IgG1 / Kappa
Mol. Weight of Antigen	40kDa
Cellular Localization	Cytoplasm
Species Reactivity	Human
Positive Control	Colon: A strong immunostaining is seen in all epithelial cells. Tonsil: A moderate to strong immunostaining occurs in the basal cell layer of the squamous epithelium of the tonsil surface.

*Optimal dilution for a specific application should be determined.

Product Images for Recombinant Cytokeratin 19 (KRT19) (Pancreatic Stem Cell Marker) Antibody



Keratin, type I cytoskeletal 19 Mouse Recombinant Monoclonal Antibody (MSVA-119M) tested on many normal and cancer tissues. The immunohistochemistry staining in these tissues aligns with the expression data in Human Protein Atlas.

Specificity & Comments

Recognizes a protein of 40kDa, identified as cytokeratin-19 (CK19), which is expressed in sweat gland, mammary gland ductal and secretory cells, bile ducts, gastrointestinal tract, bladder urothelium, oral epithelia, esophagus, and ectocervical epithelium. Anti-CK19 reacts with a wide variety of epithelial malignancies including adenocarcinomas of the colon, stomach, pancreas, biliary tract, liver, and breast. Perhaps the most useful application is the identification of thyroid carcinoma of the papillary type, although 50%-60% of follicular carcinomas are also labeled. Anti-CK19 is a useful marker for detection of tumor cells in lymph nodes, peripheral blood, bone marrow and breast cancer.

Supplied As

Ab produced in CHO cell mammalian-based expression system. Prepared in 10mM PBS with 0.05% BSA & 0.05% azide. Also available WITHOUT BSA & azide.

Storage and Stability

Antibody with azide - store at 2 to 8°C. Antibody without azide - store at -20 to -80°C. Antibody is stable for 24 months. Non-hazardous. No MSDS required.

Research Areas

Autophagy, Cardiovascular, Developmental Biology, Stem Cell Differentiation

Limitations and Warranty

This antibody is available for research use only and is not approved for use in diagnosis. There are no warranties, expressed or implied, which extend beyond this description. Company is not liable for any personal injury or economic loss resulting from this product.
