

Cytokeratin 15 (Esophageal Squamous Cell Carcinoma Marker) Antibody

Mouse Monoclonal Antibody [Clone MSVA-615M]

Catalog No	Format	Size
3866-MSM43-P0	Purified Ab with BSA and Azide	20 ug
3866-MSM43-P1	Purified Ab with BSA and Azide	100 ug

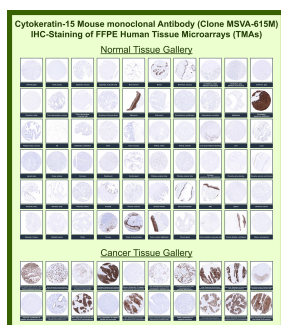
Applications	Tested Dillution	Note
Immunohistochemistry (IHC)	1:50-1:100	Manual Protocol: Freshly cut sections should be used (less than 10 days between cutting and staining). Heat-induced antigen retrieval for 5 minutes in an autoclave at 121°C in pH 7.8 Target Retrieval Solution buffer. Apply the antibody at a dilution of 1:50 at 37°C for 60 minutes. Visualization of bound antibody by the EnVision Kit (Dako, Agilent) according to the manufacturer's directions.

Product Details

Clone	MSVA-615M
Immunogen	Recombinant full-length human KRT15 protein
Host	Mouse
Clonality	Monoclonal
Isotype / Light Chain	IgG2b / Kappa
Mol. Weight of Antigen	52kDa
Cellular Localization	Cytoplasm
Species Reactivity	Human
Positive Control	Tonsil: All cells of the surface squamous epithelium and most squamous cells of the crypts should show strong KRT15 staining.

*Optimal dilution for a specific application should be determined.

Product Images for Cytokeratin 15 (Esophageal Squamous Cell Carcinoma Marker) Antibody



Keratin, type I cytoskeletal 15 Mouse Monoclonal Antibody (MSVA-615M) tested on many normal and cancer tissues. The immunohistochemistry staining in these tissues aligns with the expression data in Human Protein Atlas.

Specificity & Comments

Keratin 15 is a type I keratin which is expressed only in basal keratinocytes in stratified epithelia and does not appear to have a natural type II expression partner. Keratin 15 is down regulated in activated keratinocytes. Cytokeratin 15 is a specific marker of stem cells of the hair-follicle bulge and may be a useful marker for diagnosis between basal cell carcinoma (BCC) and trichoepithelioma. Trichoblastoma are benign neoplasms of follicular differentiation frequently found in nevus sebaceous. Many morphologic features are shared with nodular basal cell carcinoma, sometimes rendering a diagnosis difficult. Trichoblastoma and BCC show variable expression of Cytokeratin 15 and Cytokeratin 19, and absence of hair keratins.

Supplied As

Ab produced in HEK293 cell mammalian-based expression system. Prepared in 10mM PBS with 0.05% BSA & 0.05% azide. Also available WITHOUT BSA & azide.

Storage and Stability

Antibody with azide - store at 2 to 8°C. Antibody without azide - store at -20 to -80°C. Antibody is stable for 24 months. Non-hazardous. No MSDS required.

Research Areas

Basal Cell Marker, Developmental Biology

Limitations and Warranty

This antibody is available for research use only and is not approved for use in diagnosis. There are no warranties, expressed or implied, which extend beyond this description. Company is not liable for any personal injury or economic loss resulting from this product.
