

Recombinant Cytokeratin 7 (Glandular and Transitional Epithelial Marker) Antibody

Rabbit Monoclonal Antibody [Clone MSVA-607R]

Catalog No	Format	Size
3855-RBM25-P0	Purified Ab with BSA and Azide	20 ug
3855-RBM25-P1	Purified Ab with BSA and Azide	100 ug

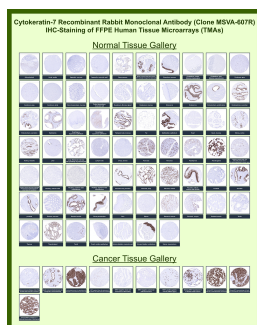
Applications	Tested Dilution	Note
Immunohistochemistry (IHC)	1:100-1:200	Manual Protocol: Freshly cut sections should be used (less than 10 days between cutting and staining). Heat-induced antigen retrieval for 5 minutes in an autoclave at 121°C in pH 7.8 Target Retrieval Solution buffer. Apply the antibody at a dilution of 1:150 at 37°C for 60 minutes. Visualization of bound antibody by the EnVision Kit (Dako, Agilent) according to the manufacturer's directions.
Western Blot (WB)	2-4ug/ml	

Product Details

Clone	MSVA-607R
Immunogen	Recombinant fragment (around aa1-100) of human KRT7 protein (exact sequence is proprietary)
Host	Rabbit
Clonality	Monoclonal
Isotype / Light Chain	IgG / Kappa
Mol. Weight of Antigen	55kDa
Cellular Localization	Cytoplasm
Species Reactivity	Human
Positive Control	Pancreas: CK7 staining is at least weak to moderate cytoplasmic intercalating ducts and strong in large pancreatic ducts.

*Optimal dilution for a specific application should be determined.

Product Images for Recombinant Cytokeratin 7 (Glandular and Transitional Epithelial Marker) Antibody



Keratin, type II cytoskeletal 7 Rabbit Recombinant Monoclonal Antibody (MSVA-607R) tested on many normal and cancer tissues. The immunohistochemistry staining in these tissues aligns with the expression data in Human Protein Atlas.

Specificity & Comments

Cytokeratin 7 in humans is a protein encoded by the KRT7 gene. It is always as a keratin pair with Cytokeratin 19. Cytokeratin 7 is expressed on most ductal and glandular epithelium including lung, breast, bladder and female genital tract, but not in most gastrointestinal epithelium, prostate, hepatocyte and squamous epithelium. In tumor tissues, its expression is absent in colon cancer, prostate cancer and squamous carcinomas. Cytokeratin 7 is often used in concert with Cytokeratin 20 and CDX-2 to aid in distinguishing ovarian, pulmonary and breast carcinomas (CK7+) from colon carcinomas (CK7-).

Supplied As

Ab produced in HEK293 cell mammalian-based expression system. Prepared in 10mM PBS with 0.05% BSA & 0.05% azide. Also available WITHOUT BSA & azide.

Storage and Stability

Antibody with azide - store at 2 to 8 °C. Antibody without azide - store at -20 to -80 °C. Antibody is stable for 24 months. Non-hazardous. No MSDS required.

Research Areas

Developmental Biology

Limitations and Warranty

This antibody is available for research use only and is not approved for use in diagnosis. There are no warranties, expressed or implied, which extend beyond this description. Company is not liable for any personal injury or economic loss resulting from this product.
