

## Recombinant Cytokeratin 6A (KRT6A) (Basal Cell Marker) Antibody

Rabbit Monoclonal Antibody [Clone MSVA-606R]

| Catalog No    | Format                         | Size   |
|---------------|--------------------------------|--------|
| 3853-RBM16-P0 | Purified Ab with BSA and Azide | 20 ug  |
| 3853-RBM16-P1 | Purified Ab with BSA and Azide | 100 ug |

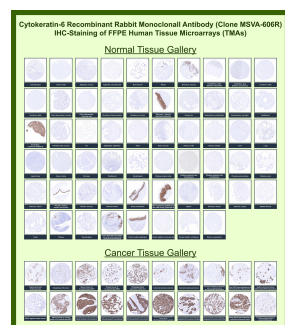
| Applications               | Tested Dillution | Note   |
|----------------------------|------------------|--|
| Immunohistochemistry (IHC) | 1:100-1:200      | Manual Protocol: Freshly cut sections should be used (less than 10 days between cutting and staining). Heat-induced antigen retrieval for 5 minutes in an autoclave at 121°C in pH 7.8 Target Retrieval Solution buffer. Apply the antibody at a dilution of 1:150 at 37°C for 60 minutes. Visualization of bound antibody by the EnVision Kit (Dako, Agilent) according to the manufacturer's directions. |

### Product Details

|                        |   |
|------------------------|---|
| Clone                  | MSVA-606R   |
| Immunogen              | Recombinant fragment of human KRT6 (exact sequence is proprietary)  |
| Host                   | Rabbit  |
| Clonality              | Monoclonal  |
| Isotype / Light Chain  | IgG / Kappa   |
| Mol. Weight of Antigen | 56kDa   |
| Cellular Localization  | Cytoplasm   |
| Species Reactivity     | Human   |
| Positive Control       | Tonsil: A strong CK6 staining should be seen in all epithelial cells of the surface epithelium except the basal cell layer where staining should be absent or weak. |

\*Optimal dilution for a specific application should be determined.

### Product Images for Recombinant Cytokeratin 6A (KRT6A) (Basal Cell Marker) Antibody



Keratin, type II cytoskeletal 6A Rabbit Recombinant Monoclonal Antibody (MSVA-606R) tested on many normal and cancer tissues. The immunohistochemistry staining in these tissues aligns with the expression data in Human Protein Atlas.

### Specificity & Comments

Cytokeratin 6 is an epidermis-specific type I keratin involved in wound healing. Involved in the activation of follicular keratinocytes after wounding, while it does not play a major role in keratinocyte proliferation or migration. This protein always paired with the type-I keratin K16. Cytokeratin 6 have been identified in epidermis only in samples from plantar glabrous skin while in hairy skin this keratin appeared to be absent in interfollicular epidermis but were clearly present in hair follicle outer root sheath, and this protein also consistently expressed in non-keratinizing stratified squamous epithelia. Among tumors, cytokeratin 6 is typically and strongly expressed in squamous cell carcinomas of different sites, preferentially in inner, maturing layers of the tumor cell nests. Cytokeratin 6 is always used with cytokeratin 5 and is a useful aid for classification of epithelioid mesotheliomas.

---

### Limitations and Warranty

This antibody is available for research use only and is not approved for use in diagnosis. There are no warranties, expressed or implied, which extend beyond this description. Company is not liable for any personal injury or economic loss resulting from this product.

---

### Supplied As

Ab produced in HEK293 cell mammalian-based expression system. Prepared in 10mM PBS with 0.05% BSA & 0.05% azide. Also available WITHOUT BSA & azide.

---

### Storage and Stability

Antibody with azide - store at 2 to 8 °C. Antibody without azide - store at -20 to -80 °C. Antibody is stable for 24 months. Non-hazardous. No MSDS required.

---

### Research Areas

Developmental Biology

---