

Recombinant CD22 / BL-CAM (B-Cell Marker) Antibody

Rabbit Monoclonal Antibody [Clone MSVA-022R]

Catalog No	Format	Size
933-RBM11-P0	Purified Ab with BSA and Azide	20 ug
933-RBM11-P1	Purified Ab with BSA and Azide	100 ug

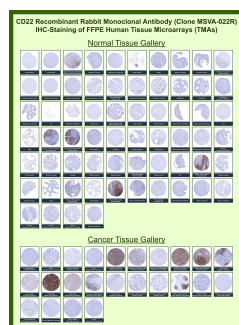
Applications	Tested Dillution	Note
Immunohistochemistry (IHC)	1:100-1:200	Manual Protocol: Freshly cut sections should be used (less than 10 days between cutting and staining). Heat-induced antigen retrieval for 5 minutes in an autoclave at 121°C in pH 7.8 Target Retrieval Solution buffer. Apply the antibody at a dilution of 1:150 at 37°C for 60 minutes. Visualization of bound antibody by the EnVision Kit (Dako, Agilent) according to the manufacturer's directions.

Product Details

Clone	MSVA-022R
Immunogen	Recombinant fragment (around aa52-178) of human BL-CAM/CD22 protein (exact sequence is proprietary)
Host	Rabbit
Clonality	Monoclonal
Isotype / Light Chain	IgG / Kappa
Mol. Weight of Antigen	130-140kDa
Cellular Localization	Cell membrane
Species Reactivity	Human
Positive Control	Tonsil or appendix: A strong, predominantly membranous CD22 staining of the germinal centre and mantle zone B-cells as well as of few interfollicular B-cells should be seen.

**Optimal dilution for a specific application should be determined.*

Product Images for Recombinant CD22 / BL-CAM (B-Cell Marker) Antibody



B-cell receptor CD22 Rabbit Recombinant Monoclonal Antibody (MSVA-022R) tested on many normal and cancer tissues. The immunohistochemistry staining in these tissues aligns with the expression data in Human Protein Atlas.

Specificity & Comments

Recognizes a protein of 130-140kDa, identified as CD22 (also known as BL-CAM). CD22 expression is restricted to normal and neoplastic B cells and is absent from other haemopoietic cell types. In B-cell ontogeny, CD22 is first expressed in the cytoplasm of pro-B and pre-B cells, and on the surface as B cells mature to become IgD+. It is not expressed by plasma cells, CD22 is found highly expressed in follicular mantle and marginal zone B-cells, and while germinal center B-cells are relatively weak. CD22 is a member of the immunoglobulin superfamily and serves as an adhesion receptor for sialic acid-bearing ligands expressed on erythrocytes and all leukocyte classes. It also associates with tyrosine kinases and play a role in signal transduction and B-cell activation.

Supplied As

Ab produced in CHO cell mammalian-based expression system. Prepared in 10mM PBS with 0.05% BSA & 0.05% azide. Also available WITHOUT BSA & azide.

Storage and Stability

Antibody with azide - store at 2 to 8 °C. Antibody without azide - store at -20 to -80 °C. Antibody is stable for 24 months. Non-hazardous. No MSDS required.

Research Areas

Cardiovascular, Immunology, B Cell Markers, Dendritic Cell Marker, Hematopoietic Stem Cells

Limitations and Warranty

This antibody is available for research use only and is not approved for diagnosis. There are no warranties, expressed or implied, which extend beyond this description. Company is not liable for any personal injury or economic loss resulting from this product.
