

Recombinant CD4 (T-Helper/Inducer Cell Marker) Antibody

Rabbit Monoclonal Antibody [Clone MSVA-004R]

Catalog No	Format	Size
920-RBM22-P0	Purified Ab with BSA and Azide	20 ug
920-RBM22-P1	Purified Ab with BSA and Azide	100 ug

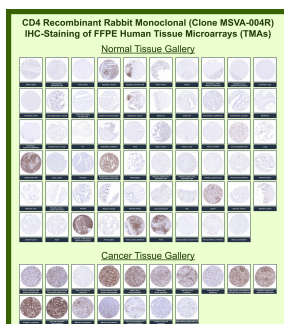
Applications	Tested Dillution	Note
Immunohistochemistry (IHC)	1:100-1:200	Manual Protocol: Freshly cut sections should be used (less than 10 days between cutting and staining). Heat-induced antigen retrieval for 5 minutes in an autoclave at 121°C in pH 7.8 Target Retrieval Solution buffer. Apply the antibody at a dilution of 1:150 at 37°C for 60 minutes. Visualization of bound antibody by the EnVision Kit (Dako, Agilent) according to the manufacturer's directions.

Product Details

Clone	MSVA-004R
Immunogen	Recombinant fragment (around aa 216-396) of human CD4 protein (exact sequence is proprietary)
Host	Rabbit
Clonality	Monoclonal
Isotype / Light Chain	IgG / Kappa
Mol. Weight of Antigen	55kDa
Cellular Localization	Cell membrane
Species Reactivity	Human
Positive Control	Tonsil: A moderate to strong membranous CD4 immunostaining should be seen in a subset of T-lymphocytes which is predominantly located in the interfollicular area. Macrophages in the germinal centres should show a moderate CD4 positivity. Liver: Kupffer cells and endothelial cells in the liver sinusoids must show at least a moderate CD4 staining.

*Optimal dilution for a specific application should be determined.

Product Images for Recombinant CD4 (T-Helper/Inducer Cell Marker) Antibody



T-cell surface glycoprotein CD4 Rabbit Recombinant Monoclonal Antibody (MSVA-004R) tested on many normal and cancer tissues. The immunohistochemistry staining in these tissues aligns with the expression data in Human Protein Atlas.

Specificity & Comments

Recognizes a protein of 55kDa, identified as CD4. It is a membrane glycoprotein of T lymphocytes that interacts with major histocompatibility complex class II antigens and is also a receptor for the human immunodeficiency virus. This protein is expressed not only in T lymphocytes, but also in B cells, macrophages, and granulocytes. It is also expressed in specific regions of the brain. The protein functions to initiate or augment the early phase of T-cell activation, and may function as an important mediator of indirect neuronal damage in infectious and immune-mediated diseases of the central nervous system. The majority of peripheral T-cell lymphomas are derived from the T-helper/regulatory cell subset so that most mature T-cell neoplasms are CD4+/CD8-. Anti-CD4 is used in the immunohistochemical staining of lymphoproliferative disorders to evaluate tumors with CD4 aberrant expression.

Limitations and Warranty

This antibody is available for research use only and is not approved for use in diagnosis. There are no warranties, expressed or implied, which extend beyond this description. Company is not liable for any personal injury or economic loss resulting from this product.

Supplied As

Ab produced in HEK293 cell mammalian-based expression system. Prepared in 10mM PBS with 0.05% BSA & 0.05% azide. Also available WITHOUT BSA & azide.

Storage and Stability

Antibody with azide - store at 2 to 8 °C. Antibody without azide - store at -20 to -80 °C. Antibody is stable for 24 months. Non-hazardous. No MSDS required.

Research Areas

AKT Signaling, Cardiovascular, Cytokine Signaling, Hematopoietic Stem Cells, Immunology, Infectious Disease
