

Recombinant Calponin-1 (Smooth Muscle Marker) Antibody

Rabbit Monoclonal Antibody [Clone MSVA-455R]

Catalog No	Format	Size
1264-RBM16-P0	Purified Ab with BSA and Azide	20 ug
1264-RBM16-P1	Purified Ab with BSA and Azide	100 ug

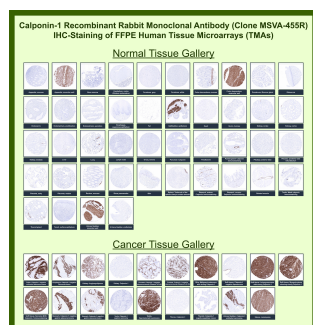
Applications	Tested Dillution	Note
Immunohistochemistry (IHC)	1:100-1:200	Manual Protocol: Freshly cut sections should be used (less than 10 days between cutting and staining). Heat-induced antigen retrieval for 5 minutes in an autoclave at 121°C in pH 7.8 Target Retrieval Solution buffer. Apply the antibody at a dilution of 1:150 at 37°C for 60 minutes. Visualization of bound antibody by the EnVision Kit (Dako, Agilent) according to the manufacturer's directions.

Product Details

Clone	MSVA-455R
Immunogen	Synthetic peptide corresponding to residues on the C-terminus of human Calponin was used as an immunogen
Host	Rabbit
Clonality	Monoclonal
Isotype / Light Chain	IgG / Kappa
Mol. Weight of Antigen	33kDa
Cellular Localization	Cytoplasm
Species Reactivity	Human
Positive Control	Colon: A moderate to strong Calponin 1 staining should be seen in the muscularis mucosae, muscularis propria and in the walls of larger blood vessels.

*Optimal dilution for a specific application should be determined.

Product Images for Recombinant Calponin-1 (Smooth Muscle Marker) Antibody



Calponin-1 Rabbit Recombinant Monoclonal Antibody (MSVA-455R) tested on many normal and cancer tissues. The immunohistochemistry staining in these tissues aligns with the expression data in Human Protein Atlas.

Specificity & Comments

Calponin a 33 kDa polypeptide, is a cytoskeleton-associated actin-binding protein that also interacts tropomyosin and calmodulin. Calponin antibody has been found to be useful as a marker for myoepithelial and basal lamina in differentiating microinvasive from in situ ductal carcinomas of the breast. Calponin antibody may also have applications in malignant myoepithelium and pleomorphic adenoma of salivary gland as well as a useful marker for fine needle aspirates of papillary breast lesions. The antibody has been found in tissue extracts from smooth muscle, but not in fibroblast extracts.

Supplied As

Ab produced in HEK293 cell mammalian-based expression system. Prepared in 10mM PBS with 0.05% BSA & 0.05% azide. Also available WITHOUT BSA & azide.

Storage and Stability

Antibody with azide - store at 2 to 8 °C. Antibody without azide - store at -20 to -80 °C. Antibody is stable for 24 months. Non-hazardous. No MSDS required.

Research Areas

Cardiovascular, Mesenchymal Stem Cell Differentiation

Limitations and Warranty

This antibody is available for research use only and is not approved for use in diagnosis. There are no warranties, expressed or implied, which extend beyond this description. Company is not liable for any personal injury or economic loss resulting from this product.
