

Recombinant Arginase 1 (Hepatocellular Carcinoma Marker) Antibody

Rabbit Monoclonal Antibody [Clone MSVA-511R]

Catalog No	Format	Size
383-RBM93-P0	Purified Ab with BSA and Azide	20 ug
383-RBM93-P1	Purified Ab with BSA and Azide	100 ug

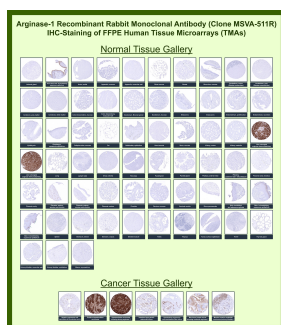
Applications	Tested Dilution	Note
Immunohistochemistry (IHC)	1:100-1:200	Manual Protocol: Freshly cut sections should be used (less than 10 days between cutting and staining). Heat-induced antigen retrieval for 5 minutes in an autoclave at 121°C in pH 7.8 Target Retrieval Solution buffer. Apply the antibody at a dilution of 1:150 at 37°C for 60 minutes. Visualization of bound antibody by the EnVision Kit (Dako, Agilent) according to the manufacturer's directions.

Product Details

Clone	MSVA-511R
Immunogen	Recombinant human ARG1 protein fragment (aa300-400) (exact sequence is proprietary)
Host	Rabbit
Clonality	Monoclonal
Isotype / Light Chain	IgG / Kappa
Mol. Weight of Antigen	35-38kDa
Cellular Localization	Cytoplasm, Cytoplasmic granule
Species Reactivity	Human
Positive Control	Liver: A strong staining should be seen in hepatocytes. Spleen: A moderate to strong positivity should be seen in granulocytes.

*Optimal dilution for a specific application should be determined.

Product Images for Recombinant Arginase 1 (Hepatocellular Carcinoma Marker) Antibody



Arginase-1 Rabbit Recombinant Monoclonal Antibody (MSVA-511R) tested on many normal and cancer tissues. The immunohistochemistry staining in these tissues aligns with the expression data in Human Protein Atlas.

Specificity & Comments

Recognizes a protein of 35-38kDa, which is identified as Arginase 1 (ARG1). Arginase is a manganese metallo-enzyme that catalyzes the hydrolysis of arginine to generate ornithine and urea. Arginase I and II are isoenzymes which differ in subcellular localization, regulation, and possibly function. Arginase I is a cytosolic enzyme, which is expressed mainly in the liver as part of the urea cycle, whereas arginase II is a mitochondrial protein found in a variety of tissues. Antibody to ARG-1 labels hepatocytes in normal tissues and granulocytes in peripheral blood. ARG-1 is a sensitive and specific marker for identification of hepatocellular carcinoma.

Supplied As

Ab produced in HEK293 cell mammalian-based expression system. Prepared in 10mM PBS with 0.05% BSA & 0.05% azide. Also available WITHOUT BSA & azide.

Storage and Stability

Antibody with azide - store at 2 to 8 °C. Antibody without azide - store at -20 to -80 °C. Antibody is stable for 24 months. Non-hazardous. No MSDS required.

Research Areas

Cardiovascular, Dendritic Cell Marker, Immunology

Limitations and Warranty

This antibody is available for research use only and is not approved for use in diagnosis. There are no warranties, expressed or implied, which extend beyond this description. Company is not liable for any personal injury or economic loss resulting from this product.
