

## Recombinant CD25 / IL2RA (Activated Lymphocyte Marker) Antibody

Rabbit Monoclonal Antibody [Clone IL2RA/12971R]

Catalog No	Format	Size
3559-RBM16-P0	Purified Ab with BSA and Azide at 200ug/ml	20 ug
3559-RBM16-P1	Purified Ab with BSA and Azide at 200ug/ml	100 ug
3559-RBM16-P1ABX	Purified Ab WITHOUT BSA or Azide at 1.0mg/ml	100 ug

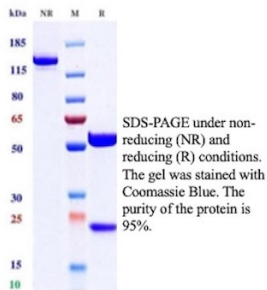
Applications	Tested Dillution	Note
Immunohistochemistry (IHC)	1-2ug/ml	30 min at RT. Staining of formalin-fixed tissues requires heating tissue sections in 10mM Tris with 1mM EDTA, pH 9.0, for 45 min at 95°C followed by cooling at RT for 20 minutes
Western Blot (WB)	2-4ug/ml	

### Product Details

<b>Clone</b>	IL2RA/12971R
<b>Immunogen</b>	Recombinant fragment (around aa1-272) of the human IL-2 Receptor alpha protein (exact sequence is proprietary)
<b>Host</b>	Rabbit
<b>Clonality</b>	Monoclonal
<b>Isotype / Light Chain</b>	IgG / Kappa
<b>Mol. Weight of Antigen</b>	30.82kDa
<b>Cellular Localization</b>	Membrane
<b>Species Reactivity</b>	Human
<b>Positive Control</b>	Human liver, tonsil, lung carcinoma or Hodgkin's lymphoma.

\*Optimal dilution for a specific application should be determined.

### Product Images for Recombinant CD25 / IL2RA (Activated Lymphocyte Marker) Antibody



SDS-PAGE Analysis of Purified CD25 Recombinant Rabbit Monoclonal Antibody (IL2RA/12971R) . Confirmation of Purity and Integrity of Antibody.

### Specificity & Comments

CD25, or interleukin 2 (IL2) receptor alpha (IL2RA), and beta (IL2RB) chains, together with the common gamma chain (IL2RG), constitute the high-affinity IL2 receptor. Homodimeric alpha chains (CD25) result in low-affinity receptor, while homodimeric beta (IL2RB) chains produce a medium-affinity receptor. Normally an integral-membrane protein, soluble CD25 has been isolated and determined to result from extracellular proteolysis. CD25 (the p55 chain of the interleukin-2 receptor) is a marker of activation for a number of cell types, including T cells, B cells, and macrophages. It also appears to be a reliable immunohistochemical marker for the discrimination of neoplastic from normal/reactive mast cells, with potential as a diagnostic tool in systemic mastocytosis. CD25 is also expressed on hairy cell leukemia.

### Supplied As

200ug/ml of Ab produced in a mammalian-based expression system. Prepared in 10mM PBS with 0.05% BSA & 0.05% azide. Also available WITHOUT BSA & azide at 1.0mg/ml.

### Storage and Stability

Antibody with azide - store at 2 to 8 °C. Antibody without azide - store at -20 to -80 °C. Antibody is stable for 24 months. Non-hazardous. No MSDS required.

## Limitations and Warranty

This antibody is available for research use only and is not approved for use in diagnosis. There are no warranties, expressed or implied, which extend beyond this description. Company is not liable for any personal injury or economic loss resulting from this product.

---