

Recombinant MSH2 (DNA Mismatch Repair Marker) Antibody

Rabbit Monoclonal Antibody [Clone MSH2/13305R]

Catalog No	Format	Size
4436-RBM84-P0	Purified Ab with BSA and Azide at 200ug/ml	20 ug
4436-RBM84-P1	Purified Ab with BSA and Azide at 200ug/ml	100 ug
4436-RBM84-P1ABX	Purified Ab WITHOUT BSA or Azide at 1.0mg/ml	100 ug

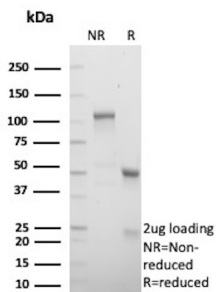
Applications	Tested Dillution	Note
Immunohistochemistry (IHC)	1-2ug/ml	30 min at RT. Staining of formalin-fixed tissues requires heating tissue sections in 10mM Tris with 1mM EDTA, pH 9.0, for 45 min at 95°C followed by cooling at RT for 20 minutes
Western Blot (WB)	2-4ug/ml	

Product Details

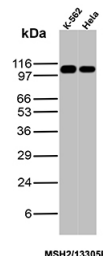
Clone	MSH2/13305R
Immunogen	Recombinant fragment of the human MSH2 protein (exact sequence is proprietary)
Host	Rabbit
Clonality	Monoclonal
Isotype / Light Chain	IgG / Kappa
Mol. Weight of Antigen	104.74kDa
Cellular Localization	Chromosome, Nucleus
Species Reactivity	Human
Positive Control	A549 or HepG2 cells. Human colon, K-562 or HeLa

*Optimal dilution for a specific application should be determined.

Product Images for Recombinant MSH2 (DNA Mismatch Repair Marker) Antibody



SDS-PAGE Analysis Purified MSH2 Recombinant Rabbit Monoclonal Antibody (MSH2/13305R). Confirmation of Integrity and Purity of Antibody.



Western blot analysis of K-562 and HeLa lysates using MSH2 Recombinant Rabbit Monoclonal Antibody (MSH2/13305R).

Specificity & Comments

Mutations in DNA mismatch repair genes are associated with hereditary nonpolyposis colorectal cancer (HNPCC). Initially, inherited mutations in the MSH2 and MLH1 homologs of the bacterial DNA mismatch repair genes MutS and MutL were found at high frequency in HNPCC and were shown to be associated with microsatellite instability. The demonstration that 10 to 45% of pancreatic, gastric, breast, ovarian and small cell lung cancers also display microsatellite instability has been interpreted to suggest that DNA mismatch repair is not restricted to HNPCC tumors but is a common feature in tumor initiation or progression.

Supplied As

200ug/ml of Ab produced in a mammalian-based expression system. Prepared in 10mM PBS with 0.05% BSA & 0.05% azide. Also available WITHOUT BSA & azide at 1.0mg/ml.

Storage and Stability

Antibody with azide - store at 2 to 8 °C. Antibody without azide - store at -20 to -80 °C. Antibody is stable for 24 months. Non-hazardous. No MSDS required.

Limitations and Warranty

This antibody is available for research use only and is not approved for use in diagnosis. There are no warranties, expressed or implied, which extend beyond this description. Company is not liable for any personal injury or economic loss resulting from this product.
