

Recombinant Peripherin / PRPH (Marker of Peripheral Neurons) Antibody

Mouse Monoclonal Antibody [Clone rPJM50]

Catalog No	Format	Size
6439-MSM3-P0	Purified Ab with BSA and Azide at 200ug/ml	20 ug
6439-MSM3-P1	Purified Ab with BSA and Azide at 200ug/ml	100 ug
6439-MSM3-P1ABX	Purified Ab WITHOUT BSA or Azide at 1.0mg/ml	100 ug
5630-MSM8-P0	Purified Ab with BSA and Azide at 200ug/ml	20 ug
5630-MSM8-P1	Purified Ab with BSA and Azide at 200ug/ml	100 ug
5630-MSM8-P1ABX	Purified Ab WITHOUT BSA or Azide at 1.0mg/ml	100 ug

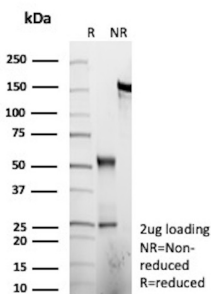
Applications	Tested Dillution	Note
Immunohistochemistry (IHC)	1-2ug/ml	30 min at RT. Staining of formalin-fixed tissues requires heating tissue sections in 10mM Tris with 1mM EDTA, pH 9.0, for 45 min at 95°C followed by cooling at RT for 20 minutes
Western Blot (WB)	2-4ug/ml	

Product Details

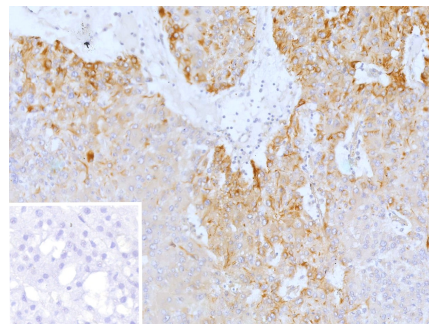
Clone	rPJM50
Immunogen	Recombinant full-length human Peripherin protein
Host	Mouse
Clonality	Monoclonal
Isotype / Light Chain	IgG2b / Kappa
Mol. Weight of Antigen	53.65kDa
Cellular Localization	Axon, Cell projection, Cytoplasm, Cytoskeleton, Perikaryon
Species Reactivity	Human
Positive Control	Human small bowel, peripheral nerves or ganglion cells. Kelly cell line.

*Optimal dilution for a specific application should be determined.

Product Images for Recombinant Peripherin / PRPH (Marker of Peripheral Neurons) Antibody



SDS-PAGE Analysis of Purified Peripherin Recombinant Mouse Monoclonal Antibody (rPJM50). Confirmation of Purity and Integrity of Antibody.



Formalin-fixed, paraffin-embedded human adrenal gland stained with Peripherin Recombinant Mouse Monoclonal Antibody (rPJM50). Inset: PBS instead of primary antibody; secondary only negative control.

Specificity & Comments

Peripherin is a 57 kD type III intermediate filament that is a specific marker for peripheral neurons, including enteric ganglion cells. Peripherin is expressed in the developing peripheral nervous system and is highly enriched in neuronal derivatives of the neural crest. Peripherin offers an advantage over other neural markers, such as S100 and NSE in that it does not stain chromaffin cell types.

Supplied As

200ug/ml of Ab produced in a mammalian-based expression system. Prepared in 10mM PBS with 0.05% BSA & 0.05% azide. Also available WITHOUT BSA & azide at 1.0mg/ml.

Storage and Stability

Antibody with azide - store at 2 to 8 °C. Antibody without azide - store at -20 to -80 °C. Antibody is stable for 24 months. Non-hazardous. No MSDS required.

Limitations and Warranty

This antibody is available for research use only and is not approved for use in diagnosis. There are no warranties, expressed or implied, which extend beyond this description. Company is not liable for any personal injury or economic loss resulting from this product.
