

## Recombinant Renal Cell Carcinoma (Carbonic Anhydrase IX) Antibody

Rabbit Monoclonal Antibody [Clone CA9/9916R]

| Catalog No      | Format                                       | Size   |
|-----------------|--|--------|
| 768-RBM29-P0    | Purified Ab with BSA and Azide at 200ug/ml   | 20 ug  |
| 768-RBM29-P1    | Purified Ab with BSA and Azide at 200ug/ml   | 100 ug |
| 768-RBM29-P1ABX | Purified Ab WITHOUT BSA or Azide at 1.0mg/ml | 100 ug |

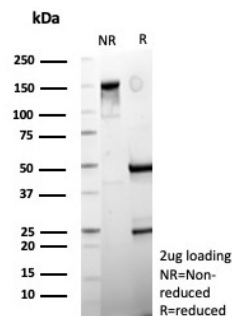
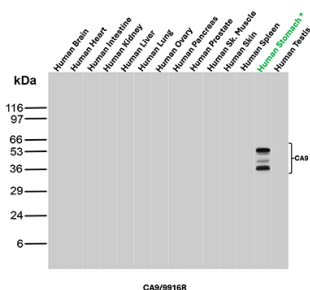
| Applications               | Tested Dillution | Note  |
|----------------------------|------------------|---|
| Immunohistochemistry (IHC) | 1-2ug/ml         | 30 min at RT. Staining of formalin-fixed tissues requires heating tissue sections in 10mM Tris with 1mM EDTA, pH 9.0, for 45 min at 95°C followed by cooling at RT for 20 minutes |
| Western Blot (WB)          | 2-4ug/ml         |   |

### Product Details

|                               |  |
|-------------------------------|--|
| <b>Clone</b>                  | CA9/9916R  |
| <b>Immunogen</b>              | Recombinant fragment (around aa280-402) of the human Carbonic Anhydrase IX protein (exact sequence is proprietary) |
| <b>Host</b>                   | Rabbit   |
| <b>Clonality</b>              | Monoclonal   |
| <b>Isotype / Light Chain</b>  | IgG / Kappa  |
| <b>Mol. Weight of Antigen</b> | 49.7kDa  |
| <b>Cellular Localization</b>  | Cell membrane, Cell projection, Microvillus membrane, Nucleolus, Nucleus   |
| <b>Species Reactivity</b>     | Human  |
| <b>Positive Control</b>       | Human Stomach  |

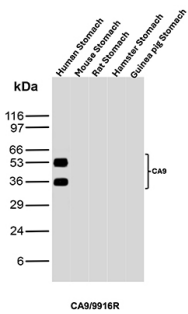
\*Optimal dilution for a specific application should be determined.

### Product Images for Recombinant Renal Cell Carcinoma (Carbonic Anhydrase IX) Antibody



Western Blot Analysis of Human Brain, Human Heart, Human Intestine, Human Kidney, Human Liver, Human Lung, Human Ovary, Human Pancreas, Human Prostrate, Human Skeletal Muscle, Human Skin, Human Spleen, Human Stomach and Human Testis tissue lysates using Carbonic Anhydrase IX Recombinant Rabbit Monoclonal Antibody (CA9/9916R).

SDS-PAGE Analysis of Purified CA9 Recombinant Rabbit Monoclonal Antibody (CA9/9916R) of Purity and Integrity of Antibody.



Western Blot Analysis of Human Stomach, Mouse Stomach, Rat Stomach, Hamster Stomach and Guinea pig Stomach tissue lysates using Carbonic Anhydrase IX Recombinant Rabbit Monoclonal Antibody (CA9/9916R).

### Specificity & Comments

Recognizes a glycoprotein of ~200kDa, identified as carbonic anhydrase IX (CAIX/gp200). Its epitope resides in the carbohydrate domain of gp200. It shows no significant cross-reactivity with other carbohydrate determinants, such as the Lewis blood group antigens, epithelial membrane antigen, HMFG, and AB blood group antigens. In normal kidney, gp200 is localized along the brush border of the pars convoluta and pars recta segments of the proximal tubule, as well as focally along the luminal surface of Bowman's capsule adjoining the outgoing proximal tubule. Reportedly, gp200 is expressed by 93% of primary and 84% of metastatic renal cell carcinomas. This MAb may be useful in the investigations of carcinomas of proximal nephrogenic differentiation especially those showing tubular differentiation.

### Limitations and Warranty

This antibody is available for research use only and is not approved for use in diagnosis. There are no warranties, expressed or implied, which extend beyond this description. Company is not liable for any personal injury or economic loss resulting from this product.

### Supplied As

200ug/ml of Ab produced in a mammalian-based expression system. Prepared in 10mM PBS with 0.05% BSA & 0.05% azide. Also available WITHOUT BSA & azide at 1.0mg/ml.

### Storage and Stability

Antibody with azide - store at 2 to 8 °C. Antibody without azide - store at -20 to -80 °C. Antibody is stable for 24 months. Non-hazardous. No MSDS required.