

Recombinant CD16 / Fc γ Receptor III Antibody

Rabbit Monoclonal Antibody [Clone FCGR3A/12961R]

Catalog No	Format	Size
2214-RBM9-P0	Purified Ab with BSA and Azide at 200ug/ml	20 ug
2214-RBM9-P1	Purified Ab with BSA and Azide at 200ug/ml	100 ug
2214-RBM9-P1ABX	Purified Ab WITHOUT BSA or Azide at 1.0mg/ml	100 ug

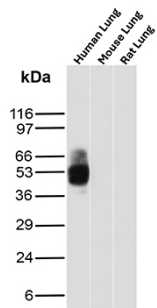
Applications	Tested Dillution	Note
Immunohistochemistry (IHC)	1-2ug/ml	30 min at RT. Staining of formalin-fixed tissues requires heating tissue sections in 10mM Tris with 1mM EDTA, pH 9.0, for 45 min at 95°C followed by cooling at RT for 20 minutes
Western Blot (WB)	2-4ug/ml	

Product Details

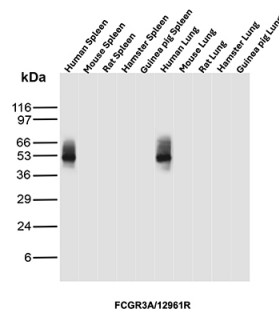
Clone	FCGR3A/12961R
Immunogen	Recombinant fragment (around aa1-254) of the human CD16 protein (exact sequence is proprietary)
Host	Rabbit
Clonality	Monoclonal
Isotype / Light Chain	IgG / Kappa
Mol. Weight of Antigen	29.09kDa
Cellular Localization	Cell membrane, Secreted
Species Reactivity	Human
Positive Control	K-562 or U-937 cells. Human Spleen, Human Lung, Lymph nodes and tonsils.

*Optimal dilution for a specific application should be determined.

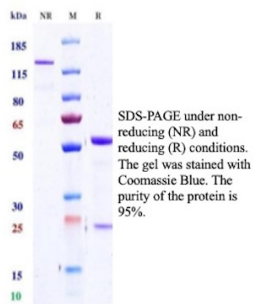
Product Images for Recombinant CD16 / Fc γ Receptor III Antibody



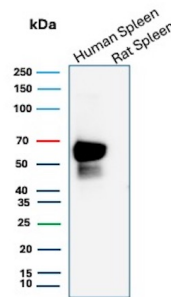
Western Blot Analysis of Human Lung, Mouse Lung and Rat Lung tissue lysates using CD16 / FCGR3A Recombinant Rabbit Monoclonal Antibody (FCGR3A/12961R).



Western Blot Analysis of Human Spleen, Mouse Spleen, Rat Spleen, Hamster Spleen, Guinea pig Spleen, Human Lungs, Mouse Lungs, Rat Lungs, Hamster Lungs and Guinea pig Lungs tissue lysates using CD16 / FCGR3A Recombinant Rabbit Monoclonal Antibody (FCGR3A/12961R).



SDS-PAGE Analysis of Purified CD16 Recombinant Rabbit Monoclonal Antibody (FCGR3A/12961R). Confirmation of Purity and Integrity of Antibody.



Western Blot Analysis of Human Spleen and Rat Spleen tissue lysates using CD16 / FCGR3A Recombinant Rabbit Monoclonal Antibody (FCGR3A/12961R).

Specificity & Comments

It recognizes CD16 (FcγRIII), the low-affinity receptor for IgG with an apparent molecular weight of 50-80kDa. Two similar genes represent CD16, CD16A (FcγRIIIA), which exists as a hetero-oligomeric polypeptide-anchored form in macrophages and NK cells and CD16B (FcγRIIIB), which exist as a monomeric GPI-anchored form in neutrophils. Furthermore, there are two known polymorphisms of CD16B, NA-1 and NA-2. Individuals homozygous for NA-2 show a lower phagocytic capacity compared with NA-1. CD16 binds IgG in the form of immune complexes and shows preferential binding of IgG1 and IgG3 isotypes and minimal binding of IgG2 and IgG4. Upon IgG binding, both CD16 isoforms initiate signal transduction cascades that lead to a variety of responses including antibody-dependent cell-mediated cytotoxicity (ADCC), phagocytosis, degranulation and proliferation.

Limitations and Warranty

This antibody is available for research use only and is not approved for use in diagnosis. There are no warranties, expressed or implied, which extend beyond this description. Company is not liable for any personal injury or economic loss resulting from this product.

Supplied As

200ug/ml of Ab produced in a mammalian-based expression system. Prepared in 10mM PBS with 0.05% BSA & 0.05% azide. Also available WITHOUT BSA & azide at 1.0mg/ml.

Storage and Stability

Antibody with azide - store at 2 to 8 °C. Antibody without azide - store at -20 to -80 °C. Antibody is stable for 24 months. Non-hazardous. No MSDS required.