

Recombinant MCM6 (Proliferation Marker) Antibody

Rabbit Monoclonal Antibody [Clone MCM6/12975R]

Catalog No	Format	Size
4175-RBM4-P0	Purified Ab with BSA and Azide at 200ug/ml	20 ug
4175-RBM4-P1	Purified Ab with BSA and Azide at 200ug/ml	100 ug
4175-RBM4-P1ABX	Purified Ab WITHOUT BSA or Azide at 1.0mg/ml	100 ug

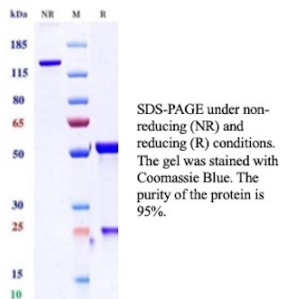
Applications	Tested Dillution	Note
Immunohistochemistry (IHC)	1-2ug/ml	30 min at RT. Staining of formalin-fixed tissues requires heating tissue sections in 10mM Tris with 1mM EDTA, pH 9.0, for 45 min at 95°C followed by cooling at RT for 20 minutes
Western Blot (WB)	2-4ug/ml	

Product Details

Clone	MCM6/12975R
Immunogen	Recombinant fragment (around aa228-368) of the human MCM6 protein (exact sequence is proprietary)
Host	Rabbit
Clonality	Monoclonal
Isotype / Light Chain	IgG / Kappa
Mol. Weight of Antigen	92.89kDa
Cellular Localization	Chromosome, Nucleus
Species Reactivity	Human
Positive Control	A-431, Human skin or squamous cell carcinoma (IHC).

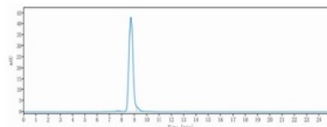
*Optimal dilution for a specific application should be determined.

Product Images for Recombinant MCM6 (Proliferation Marker) Antibody



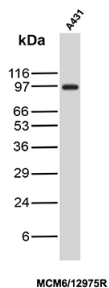
SDS-PAGE Analysis of Purified MCM6 Recombinant Rabbit Monoclonal Antibody (MCM6/12975R). Confirmation of Purity and Integrity of Antibody.

Purity: SEC-HPLC

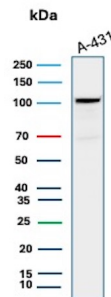


The purity of the protein is 96.0 % determined by SEC-HPLC.

SEC-HPLC Analysis of Purified MCM6 Recombinant Rabbit Monoclonal Antibody(MCM6/12975R). Confirmation of Purity and Integrity of Antibody.



Western Blot Analysis of A-431 lysate using MCM6 Recombinant Rabbit Monoclonal Antibody (MCM6/12975R).



Western Blot Analysis of A-431 lysate using MCM6 Recombinant Rabbit Monoclonal Antibody (MCM6/12975R).

Specificity & Comments

The mini-chromosome maintenance (MCM) family of proteins, including MCM2, MCM3, MCM6 (Cdc21), MCM5 (Cdc46), MCM6 (Mis5) and MCM7 (Cdc47), are regulators of DNA replication that act to ensure replication occurs only once in the cell cycle. Expression of MCM proteins increases during cell growth, peaking at G1/S phase. The MCM proteins each contain an ATP-binding motif, which is predicted to mediate ATP-dependent opening of double-stranded DNA. MCM proteins are regulated by E2F transcription factors, which induce MCM expression, and by protein kinases, which interact with MCM proteins to maintain the post-replicative state of the cell. MCM2/MCM6 complexes function as substrates for Cdc2/cyclin B in vitro.

Limitations and Warranty

This antibody is available for research use only and is not approved for use in diagnosis. There are no warranties, expressed or implied, which extend beyond this description. Company is not liable for any personal injury or economic loss resulting from this product.

Supplied As

200ug/ml of Ab produced in a mammalian-based expression system. Prepared in 10mM PBS with 0.05% BSA & 0.05% azide. Also available WITHOUT BSA & azide at 1.0mg/ml.

Storage and Stability

Antibody with azide - store at 2 to 8 °C. Antibody without azide - store at -20 to -80 °C. Antibody is stable for 24 months. Non-hazardous. No MSDS required.