

Recombinant Transthyretin (Prealbumin) Antibody

Rabbit Monoclonal Antibody [Clone TTR/12960R]

Catalog No	Format	Size
7276-RBM9-P0	Purified Ab with BSA and Azide at 200ug/ml	20 ug
7276-RBM9-P1	Purified Ab with BSA and Azide at 200ug/ml	100 ug
7276-RBM9-P1ABX	Purified Ab WITHOUT BSA or Azide at 1.0mg/ml	100 ug

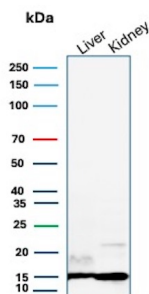
Applications	Tested Dillution	Note
Immunohistochemistry (IHC)	1-2ug/ml	30 min at RT. Staining of formalin-fixed tissues requires heating tissue sections in 10mM Tris with 1mM EDTA, pH 9.0, for 45 min at 95°C followed by cooling at RT for 20 minutes
Western Blot (WB)	2-4ug/ml	

Product Details

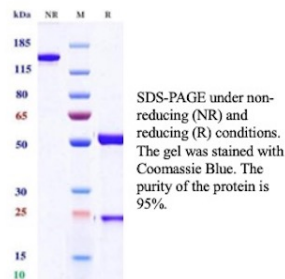
Clone	TTR/12960R
Immunogen	Recombinant fragment (around aa51-147) of the human Transthyretin (TTR) protein (exact sequence is proprietary)
Host	Rabbit
Clonality	Monoclonal
Isotype / Light Chain	IgG / Kappa
Mol. Weight of Antigen	15.89kDa
Cellular Localization	Cytoplasm, Secreted
Species Reactivity	Human
Positive Control	Human liver, Brain and Kidney

*Optimal dilution for a specific application should be determined.

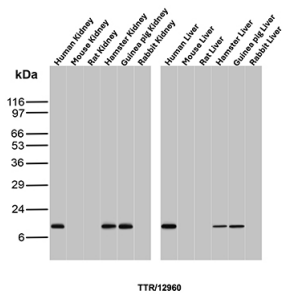
Product Images for Recombinant Transthyretin (Prealbumin) Antibody



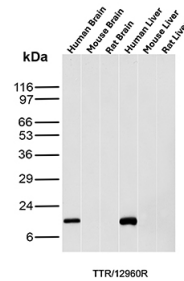
Western blot analysis of human liver and kidney tissue lysates using Transthyretin Recombinant Rabbit Monoclonal Antibody (TTR/12960R).



SDS-PAGE Analysis of Purified TTR Recombinant Rabbit Monoclonal Antibody (TTR/12960R). Confirmation of Purity and Integrity of Antibody.



Western Blot Analysis of Human Kidney, Mouse Kidney, Rat Kidney, Hamster Kidney, Guinea Pig Kidney, Rabbit Kidney, Human Liver, Mouse Liver, Rat Liver, Hamster Liver, Guinea Pig Liver, Rabbit Liver tissue lysates using TTR Rabbit Monoclonal Antibody (TTR/12960)



Western blot analysis of (1) human brain, (2) mouse brain, (3) rat brain, (4) human liver, (5) mouse liver, and (6) rat liver tissue lysates using Transthyretin Recombinant Rabbit Monoclonal Antibody (TTR/12960R).

Specificity & Comments

Prealbumin, also designated transthyretin, is a major thyroid-hormone binding protein involved in transporting thyroxine from the bloodstream to the brain. Prealbumin is located in the cytoplasm and in the vesicles of developing rat brain cells, and is thought to be transported there from the cerebrospinal fluid via endocytosis. Sequence variants of this protein have been identified in amyloid fibrils from patients with familial amyloidotic polyneuropathy (FAP), the most common form of hereditary systemic amyloidosis. Although the biologically active form of Prealbumin is a tetramer, the amyloidogenic intermediate is thought to be a monomeric species. Prealbumin also binds to the retinol carrier protein RBP (retinol-binding protein).

Limitations and Warranty

This antibody is available for research use only and is not approved for use in diagnosis. There are no warranties, expressed or implied, which extend beyond this description. Company is not liable for any personal injury or economic loss resulting from this product.

Supplied As

200ug/ml of Ab produced in a mammalian-based expression system. Prepared in 10mM PBS with 0.05% BSA & 0.05% azide. Also available WITHOUT BSA & azide at 1.0mg/ml.

Storage and Stability

Antibody with azide - store at 2 to 8 °C. Antibody without azide - store at -20 to -80 °C. Antibody is stable for 24 months. Non-hazardous. No MSDS required.