

## Recombinant Colipase / CLPS Antibody

Rabbit Monoclonal Antibody [Clone CLPS/12972R]

Catalog No	Format	Size
1208-RBM16-P0	Purified Ab with BSA and Azide at 200ug/ml	20 ug
1208-RBM16-P1	Purified Ab with BSA and Azide at 200ug/ml	100 ug
1208-RBM16-P1ABX	Purified Ab WITHOUT BSA or Azide at 1.0mg/ml	100 ug

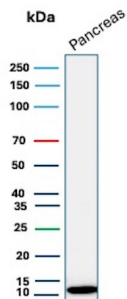
Applications	Tested Dillution	Note
Immunohistochemistry (IHC)	1-2ug/ml	30 min at RT. Staining of formalin-fixed tissues requires heating tissue sections in 10mM Tris with 1mM EDTA, pH 9.0, for 45 min at 95°C followed by cooling at RT for 20 minutes
Western Blot (WB)	2-4ug/ml	

### Product Details

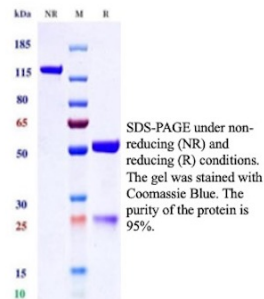
<b>Clone</b>	CLPS/12972R
<b>Immunogen</b>	Recombinant fragment (around aa19-112) of the human Colipase protein (exact sequence is proprietary)
<b>Host</b>	Rabbit
<b>Clonality</b>	Monoclonal
<b>Isotype / Light Chain</b>	IgG / Kappa
<b>Mol. Weight of Antigen</b>	11.95kDa
<b>Cellular Localization</b>	Secreted
<b>Species Reactivity</b>	Human, Mouse, Rat
<b>Positive Control</b>	Human pancreas, breast cancer or esophagus cancer.

\*Optimal dilution for a specific application should be determined.

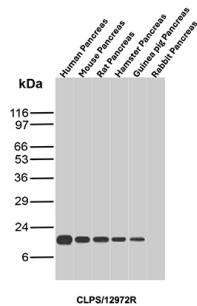
### Product Images for Recombinant Colipase / CLPS Antibody



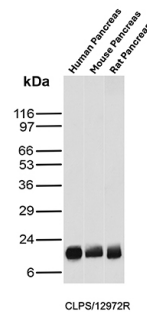
Western blot analysis of Human pancreas tissue lysate using Colipase Rabbit Recombinant Monoclonal Antibody (CLPS/12972R).



SDS-PAGE Analysis of Purified CLPS Recombinant Rabbit Monoclonal Antibody (CLPS/12972R). Confirmation of Purity and Integrity of Antibody.



Western blot analysis of Human pancreas, Mouse pancreas, Rat pancreas, Hamster Pancreas, Guinea pig Pancreas and Rabbit Pancreas tissue lysates using Colipase Rabbit Recombinant Monoclonal Antibody (CLPS/12972R).



Western blot analysis of Human pancreas, Mouse pancreas and Rat pancreas tissue lysates using Colipase Rabbit Recombinant Monoclonal Antibody (CLPS/12972R).

### Specificity & Comments

The lipase gene family belongs to one of the most robust genetic superfamilies found in living organisms, which includes esterases and thioesterases. Members of the AB hydrolase subfamily include Hepatic Lipase (HL), Endothelial Lipase (EL), Lipoprotein Lipase (LPL), Pancreatic Lipase (PL), Gastric Lipase (GL) and LCAT. These family members play a crucial role in the metabolism of lipids. Pancreatic lipase, also designated pancreatic triacylglycerol acyl hydrolase, is important for dietary fat absorption as it hydrolyses triglycerides into diglycerides, monoglycerides and free fatty acids. Colipase, also known as CLPS or pancreatic colipase preproprotein, is a 112 amino acid secreted protein that functions as a cofactor of pancreatic lipase. Necessary for dietary lipid hydrolysis and localizing to pancreatic acinar cells, colipase allows pancreatic lipase to anchor itself to the lipid-water interface of lipid micelles, thereby preventing intestinal bile salts from washing it off.

### Limitations and Warranty

This antibody is available for research use only and is not approved for use in diagnosis. There are no warranties, expressed or implied, which extend beyond this description. Company is not liable for any personal injury or economic loss resulting from this product.

### Supplied As

200ug/ml of Ab produced in a mammalian-based expression system. Prepared in 10mM PBS with 0.05% BSA & 0.05% azide. Also available WITHOUT BSA & azide at 1.0mg/ml.

### Storage and Stability

Antibody with azide - store at 2 to 8 °C. Antibody without azide - store at -20 to -80 °C. Antibody is stable for 24 months. Non-hazardous. No MSDS required.