

Recombinant Cathepsin G (Neutrophil Marker) Antibody

Mouse Monoclonal Antibody [Clone r19C3]

Catalog No	Format	Size
1511-MSM3-P0	Purified Ab with BSA and Azide at 200ug/ml	20 ug
1511-MSM3-P1	Purified Ab with BSA and Azide at 200ug/ml	100 ug
1511-MSM3-P1ABX	Purified Ab WITHOUT BSA and Azide at 1.0mg/ml	100 ug

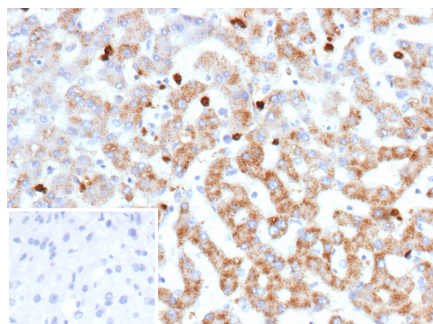
Applications	Tested Dillution	Note
Immunohistochemistry (IHC)	1-2ug/ml	30 min at RT. Staining of formalin-fixed tissues requires heating tissue sections in 10mM Tris with 1mM EDTA, pH 9.0, for 45 min at 95°C followed by cooling at RT for 20 minutes
Western Blot (WB)	2-4ug/ml	

Product Details

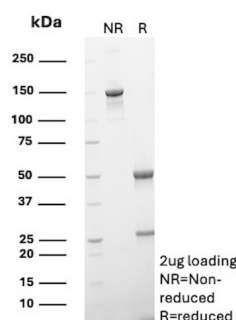
Clone	r19C3
Gene Name	CTSG
Immunogen	Prokaryotic recombinant protein corresponding to a 124 amino acid N-terminal region of the cathepsin G molecule
Host	Mouse
Clonality	Monoclonal
Isotype / Light Chain	IgG1 / Kappa
Mol. Weight of Antigen	32kDa
Cellular Localization	Cell membrane, Cytoplasm
Species Reactivity	Human
Positive Control	THP-1 cells. Human bone marrow or lymphoid tissue.

**Optimal dilution for a specific application should be determined.*

Product Images for Recombinant Cathepsin G (Neutrophil Marker) Antibody



Formalin-fixed, paraffin-embedded human liver stained with Cathepsin G Recombinant Mouse Monoclonal Antibody (r19C3). Inset: PBS instead of primary antibody; secondary only negative control.



SDS-PAGE Analysis of Purified Cathepsin G Recombinant Mouse Monoclonal Antibody (r19C3). Confirmation of Purity and Integrity of Antibody.

Specificity & Comments

Cathepsins are members of the papain family of cysteine proteases which are involved in a variety of physiological processes such as proenzyme activation, enzyme inactivation, antigen presentation, hormone maturation, tissue remodeling and bone matrix resorption. Cathepsin G is a 29 kD serine protease and is located in neutrophilic polymorphonuclear leukocytes which contain specialized azurophil granules together with two other serine proteases; elastase and protease 3. These three proteases may participate in the killing and digestion of engulfed pathogens and in connective tissue remodeling at sites of inflammation. Cathepsin G has also been found to be essential for the induction of human natural killer cell cytotoxicity.

Limitations and Warranty

This antibody is available for research use only and is not approved for use in diagnosis. There are no warranties, expressed or implied, which extend beyond this description. Company is not liable for any personal injury or economic loss resulting from this product.

Supplied As

200ug/ml of Ab produced in CHO cell mammalian-based expression system. Prepared in 10mM PBS with 0.05% BSA & 0.05% azide. Also available WITHOUT BSA & azide at 1.0mg/ml.

Storage and Stability

Antibody with azide - store at 2 to 8°C. Antibody without azide - store at -20 to -80°C. Antibody is stable for 24 months. Non-hazardous. No MSDS required.

Research Areas

Immunology
