

Recombinant CD10 (Membrane Metalloendopeptidase) Antibody

Rabbit Monoclonal Antibody [Clone MME/12957R]

| Catalog No | Format | Size |
|------------------|--|--------|
| 4311-RBM64-P0 | Purified Ab with BSA and Azide at 200ug/ml | 20 ug |
| 4311-RBM64-P1 | Purified Ab with BSA and Azide at 200ug/ml | 100 ug |
| 4311-RBM64-P1ABX | Purified Ab WITHOUT BSA or Azide at 1.0mg/ml | 100 ug |

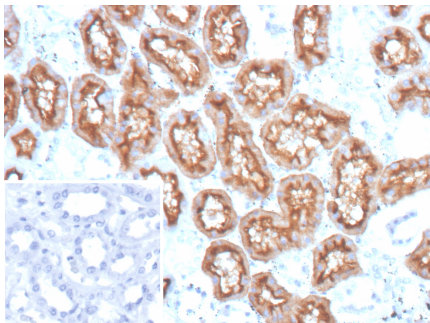
| Applications | Tested Dillution | Note |
|----------------------------|------------------|---|
| Immunohistochemistry (IHC) | 1-2ug/ml | 30 min at RT. Staining of formalin-fixed tissues requires heating tissue sections in 10mM Tris with 1mM EDTA, pH 9.0, for 45 min at 95°C followed by cooling at RT for 20 minutes |
| Western Blot (WB) | 2-4ug/ml | |

Product Details

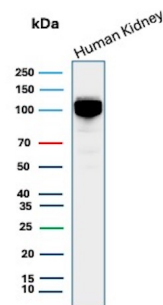
| | |
|-------------------------------|---|
| Clone | MME/12957R |
| Immunogen | Recombinant fragment (around aa1-750) of the human CD10 protein (exact sequence is proprietary) |
| Host | Rabbit |
| Clonality | Monoclonal |
| Isotype / Light Chain | IgG / Kappa |
| Mol. Weight of Antigen | 85.51kDa |
| Cellular Localization | Cell membrane |
| Species Reactivity | Human, Mouse, Rat |
| Positive Control | Intestine or kidney. |

*Optimal dilution for a specific application should be determined.

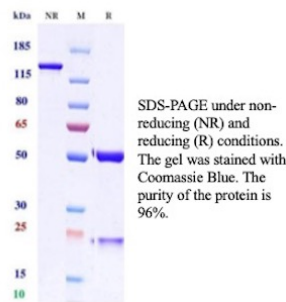
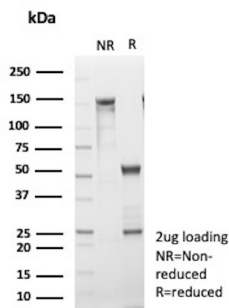
Product Images for Recombinant CD10 (Membrane Metalloendopeptidase) Antibody



Formalin-fixed, paraffin-embedded human kidney stained with CD10 Recombinant Rabbit Monoclonal Antibody (MME/12957R). Inset: PBS instead of primary antibody; secondary only negative control.

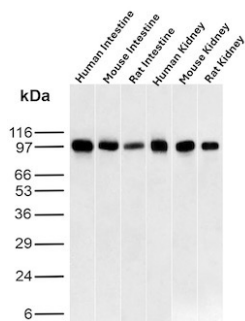


Western Blot Analysis of Human kidney tissue lysate using CD10 Recombinant Rabbit Monoclonal Antibody (MME/12957R).



SDS-PAGE Analysis of Purified CD10 Recombinant Rabbit Monoclonal Antibody (MME/12925R). Confirmation of Purity and Integrity of Antibody.

SDS-PAGE Analysis of Purified CD10 Recombinant Rabbit Monoclonal Antibody (MME/12957R). Confirmation of Purity and Integrity of Antibody.



Western Blot Analysis of Human Intestine, Mouse Intestine, Rat Intestine, Human kidney, Mouse kidney and Rat kidney tissue lysates using CD10 Recombinant Rabbit Monoclonal Antibody (MME/12957R).

Specificity & Comments

Recognizes a 100kDa glycoprotein, identified as CD10, also known as Common Acute Lymphocytic Leukemia Antigen (CALLA). It is a cell surface enzyme with neutral metalloendopeptidase activity, which inactivates a variety of biologically active peptides. CD10 is expressed on the cells of lymphoblastic, Burkitt's, and follicular germinal center lymphomas, and on cells from patients with chronic myelocytic leukemia (CML). It is also expressed on the surface of normal early lymphoid progenitor cells, immature B cells within adult bone marrow and germinal center B cells within lymphoid tissue. CD10 is also present on breast myoepithelial cells, bile canaliculi, fibroblasts, with especially high expression on the brush border of kidney and gut epithelial cells.

Limitations and Warranty

This antibody is available for research use only and is not approved for use in diagnosis. There are no warranties, expressed or implied, which extend beyond this description. Company is not liable for any personal injury or economic loss resulting from this product.

Supplied As

200ug/ml of Ab produced in a mammalian-based expression system. Prepared in 10mM PBS with 0.05% BSA & 0.05% azide. Also available WITHOUT BSA & azide at 1.0mg/ml.

Storage and Stability

Antibody with azide - store at 2 to 8 °C. Antibody without azide - store at -20 to -80 °C. Antibody is stable for 24 months. Non-hazardous. No MSDS required.