

Recombinant ALDH1A1 (Aldehyde Dehydrogenase 1A1) Antibody

Mouse Monoclonal Antibody [Clone rALDH1A1/13668]

Catalog No	Format	Size
216-MSM25-P0	Purified Ab with BSA and Azide at 200ug/ml	20 ug
216-MSM25-P1	Purified Ab with BSA and Azide at 200ug/ml	100 ug
216-MSM25-P1ABX	Purified Ab WITHOUT BSA or Azide at 1.0mg/ml	100 ug

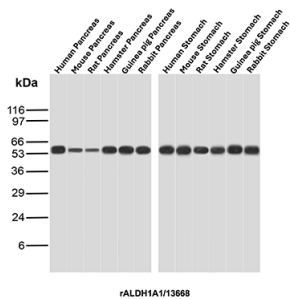
Applications	Tested Dillution	Note
Immunohistochemistry (IHC)	1-2ug/ml	30 min at RT. Staining of formalin-fixed tissues requires heating tissue sections in 10mM Tris with 1mM EDTA, pH 9.0, for 45 min at 95°C followed by cooling at RT for 20 minutes
Western Blot (WB)	2-4ug/ml	

Product Details

Clone	rALDH1A1/13668
Immunogen	Recombinant fragment (around aa315-434) of the human ALDH1A1 protein (exact sequence is proprietary)
Host	Mouse
Clonality	Monoclonal
Isotype / Light Chain	IgG1 / Kappa
Mol. Weight of Antigen	54.86kDa
Cellular Localization	Axon, Cell projection, Cytoplasm, Cytosol
Species Reactivity	Human
Positive Control	Liver, Stomach, Pancreas.

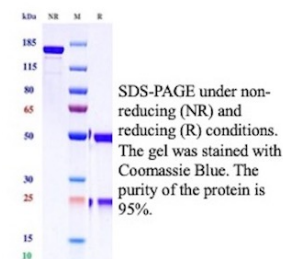
*Optimal dilution for a specific application should be determined.

Product Images for Recombinant ALDH1A1 (Aldehyde Dehydrogenase 1A1) Antibody

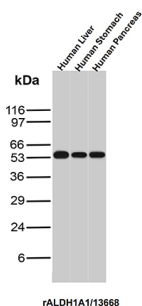


Western Blot Analysis of Pancreas and Stomach tissue lysates of different species using ALDH1A1 Recombinant Mouse Monoclonal Antibody (rALDH1A1/13668).

Purity: SDS-PAGE



SDS-PAGE Analysis of Purified ALDH1A1 Recombinant Mouse Monoclonal Antibody (rALDH1A1/13668). Confirmation of Purity and Integrity of Antibody.



Western Blot Analysis of Liver, Stomach and Pancreas of human tissue lysates using ALDH1A1 Recombinant Mouse Monoclonal Antibody (rALDH1A1/13668).

Specificity & Comments

ALDH1A1 belongs to the ALDH enzymes, a family of evolutionarily conserved enzymes comprised of 19 isoforms that are localized in the cytoplasm, mitochondria or nucleus. ALDH1A1 is predominantly expressed in the epithelium of testis, brain, eye, liver, kidney, as well as neural and hematopoietic stem cells. Reportedly, high ALDH1A1 expression is found in solitary fibrous tumor (SFT) and hemangiopericytoma (HPC), compared to meningiomas and synovial sarcomas. In combination with CD34, ALDH1A1 may be useful for the differentiation among SFT, HPC, meningioma, and synovial sarcoma.

Limitations and Warranty

This antibody is available for research use only and is not approved for use in diagnosis. There are no warranties, expressed or implied, which extend beyond this description. Company is not liable for any personal injury or economic loss resulting from this product.

Supplied As

200ug/ml of Ab produced in a mammalian-based expression system. Prepared in 10mM PBS with 0.05% BSA & 0.05% azide. Also available WITHOUT BSA & azide at 1.0mg/ml.

Storage and Stability

Antibody with azide - store at 2 to 8 °C. Antibody without azide - store at -20 to -80 °C. Antibody is stable for 24 months. Non-hazardous. No MSDS required.