

Recombinant IgE Immunoglobulin Antibody

Mouse Monoclonal Antibody [Clone rIGHE/13128]

| Catalog No | Format | Size |
|-----------------|--|--------|
| 3497-MSM4-P0 | Purified Ab with BSA and Azide at 200ug/ml | 20 ug |
| 3497-MSM4-P1 | Purified Ab with BSA and Azide at 200ug/ml | 100 ug |
| 3497-MSM4-P1ABX | Purified Ab WITHOUT BSA or Azide at 1.0mg/ml | 100 ug |

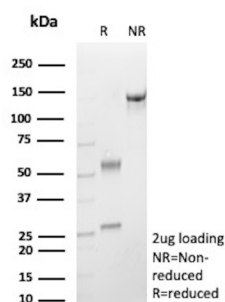
| Applications | Tested Dillution | Note |
|-------------------|------------------|------|
| Western Blot (WB) | 2-4ug/ml | |

Product Details

| | |
|------------------------------|--|
| Clone | rIGHE/13128 |
| Immunogen | Recombinant fragment of the human IgE Immunoglobulin protein (exact sequence is proprietary) |
| Host | Mouse |
| Clonality | Monoclonal |
| Isotype / Light Chain | IgG2b / Kappa |
| Species Reactivity | Human |

*Optimal dilution for a specific application should be determined.

Product Images for Recombinant IgE Immunoglobulin Antibody



SDS-PAGE of Analysis Purified IGHE Recombinant Mouse Monoclonal Antibody (rIGHE/13128). Confirmation of Purity and Integrity of Antibody.

Specificity & Comments

Immunoglobulins are four-chain, Y-shaped, monomeric structures comprised of two identical heavy chains and two identical light chains held together through interchain disulfide bonds. The chains form two domains, the Fab (antigen binding) fragment and the Fc (constant) fragment. Immunoglobulin epsilon (IgE) exists as a monomer. The IgE heavy chain is an e chain, and the light chains are either k- or l- chains. IgE is significantly involved in the allergic response of the body. It binds to receptors on the surface of basophils, mast cells and activated eosinophils. One dominant functional activity of IgE is the sensitization of mast cells. IgE binds to the Fc e RI receptor on the surface of mast cells, causing the cell to release chemicals that induce reactions such as sneezing and coughing. IgE also helps to protect the host against large parasites. It coats the surface of the parasite attracting eosinophils via the Fc e RI receptor. The eosinophils can then attack the parasites that are too large to be ingested by phagocytes.

Limitations and Warranty

This antibody is available for research use only and is not approved for use in diagnosis. There are no warranties, expressed or implied, which extend beyond this description. Company is not liable for any personal injury or economic loss resulting from this product.

Supplied As

200ug/ml of Ab produced in a mammalian-based expression system. Prepared in 10mM PBS with 0.05% BSA & 0.05% azide. Also available WITHOUT BSA & azide at 1.0mg/ml.

Storage and Stability

Antibody with azide - store at 2 to 8 °C. Antibody without azide - store at -20 to -80 °C. Antibody is stable for 24 months. Non-hazardous. No MSDS required.