

HLA-E (Major histocompatibility complex, class I, E) Antibody

Mouse Monoclonal Antibody [Clone HLAE/13126]

Catalog No	Format	Size
3133-MSM6-P0	Purified Ab with BSA and Azide at 200ug/ml	20 ug
3133-MSM6-P1	Purified Ab with BSA and Azide at 200ug/ml	100 ug
3133-MSM6-P1ABX	Purified Ab without BSA and Azide at 1.0mg/ml	100 ug

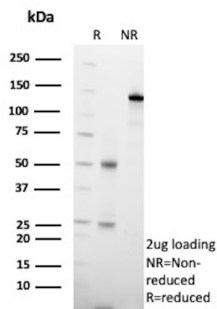
Applications	Tested Dillution	Note
Western Blot (WB)	2-4ug/ml	

Product Details

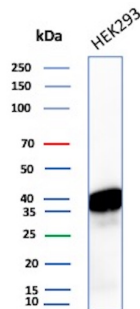
Clone	HLAE/13126
Immunogen	Recombinant fragment (around aa1-150) of human HLAE protein (exact sequence is proprietary)
Host	Mouse
Clonality	Monoclonal
Isotype / Light Chain	IgG2 / Kappa
Cellular Localization	Secreted
Species Reactivity	Human
Positive Control	Human colon or tonsil.

*Optimal dilution for a specific application should be determined.

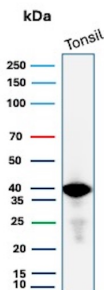
Product Images for HLA-E (Major histocompatibility complex, class I, E) Antibody



SDS-PAGE Analysis of Purified HLA-E Mouse Monoclonal Antibody (HLAE/13126). Confirmation of Purity and Integrity of Antibody.



Western blot analysis of HEK293 cell lysate using HLAE Mouse Monoclonal Antibody (HLAE/13126).



Western blot analysis of human tonsil tissue lysate using HLAE Mouse Monoclonal Antibody (HLAE/13126).

Specificity & Comments

HLA-E Antibody (3H2679) is an IgG₁ mouse monoclonal HLA-E antibody (also designated HLA major histocompatibility complex, class I, E antibody, human leukocyte antigen (HLA) E antibody, 45 kDa transmembrane class I human leukocyte antigen E antibody, chromosome 6p22 gene complex class 1E antibody, or natural killer cell (NK) expansion marker antibody) that detects the HLA-E protein of human origin by WB, IP, IF and IHC(P). HLA-E Antibody (3H2679) is available as the non-conjugated anti-HLA-E antibody. Major histocompatibility complex (MHC) molecules, which include human leukocyte antigens (HLAs), form an integral part of the immune response system. They are cell-surface receptors that bind foreign peptides and present them to cytotoxic T lymphocytes (CTLs). MHC class I molecules consist of two polypeptide chains, an α or heavy chain and a non-covalently associated protein, β -2-Microglobulin. The differential structural properties of MHC class I and class II molecules account for their respective roles in activating different populations of T lymphocytes. HLA-A is a MHC class I heavy chain molecule that plays a central role in the immune system by presenting peptides derived from the endoplasmic reticulum lumen. HLA-B and HLA-C are proteins encoded by closely related genes that also exist in the MHC class I. HLA-E belongs to the HLA class I heavy chain paralogs. HLA-E is a heterodimer consisting of a heavy chain and a light chain. The heavy chain is anchored in the membrane. HLA-E binds a restricted subset of peptides derived from the leader peptides of other class I molecules.

Limitations and Warranty

This antibody is available for research use only and is not approved for use in diagnosis. There are no warranties, expressed or implied, which extend beyond this description. Company is not liable for any personal injury or economic loss resulting from this product.

Supplied As

200ug/ml of Ab purified from Bioreactor Concentrate by Protein A/G. Prepared in 10mM PBS with 0.05% BSA & 0.05% azide. Also available WITHOUT BSA & azide at 1.0mg/ml.

Storage and Stability

Antibody with azide - store at 2 to 8°C. Antibody without azide - store at -20 to -80°C. Antibody is stable for 24 months. Non-hazardous. No MSDS required.

Research Areas

Immunology