

Recombinant CD25 / IL2RA (Activated Lymphocyte Marker) Antibody

Rabbit Monoclonal Antibody [Clone IL2RA/9378R]

Catalog No	Format	Size
3559-RBM13-P0	Purified Ab with BSA and Azide at 200ug/ml	20 ug
3559-RBM13-P1	Purified Ab with BSA and Azide at 200ug/ml	100 ug
3559-RBM13-P1ABX	Purified Ab WITHOUT BSA and Azide at 1.0mg/ml	100 ug

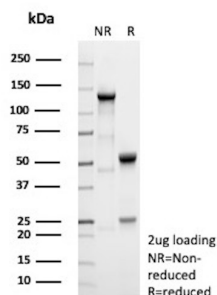
Applications	Tested Dillution	Note
Immunohistochemistry (IHC)	1-2ug/ml	30 min at RT. Staining of formalin-fixed tissues requires heating tissue sections in 10mM Tris with 1mM EDTA, pH 9.0, for 45 min at 95°C followed by cooling at RT for 20 minutes

Product Details

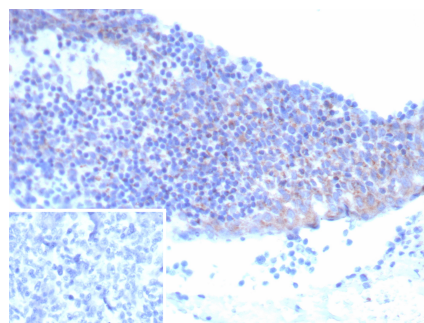
Clone	IL2RA/9378R
Gene Name	IL2RA
Immunogen	Recombinant fragment (around aa1-250) of human IL2RA protein (exact sequence is proprietary)
Host	Rabbit
Clonality	Monoclonal
Isotype / Light Chain	IgG / Kappa
Mol. Weight of Antigen	31kDa
Cellular Localization	Cell membrane, Cytoplasm
Species Reactivity	Human
Positive Control	Human tonsil, small bowel, spleen, mastocytosis, or Hodgkin's lymphoma.

*Optimal dilution for a specific application should be determined.

Product Images for Recombinant CD25 / IL2RA (Activated Lymphocyte Marker) Antibody



SDS-PAGE Analysis of Purified CD25 Recombinant Rabbit Monoclonal Antibody (IL2RA/9378R). Confirmation of Purity and Integrity of Antibody.



Formalin-fixed, paraffin-embedded human tonsil stained with CD25 Recombinant Rabbit Monoclonal Antibody (IL2RA/9378R). Inset: PBS instead of primary antibody; secondary only negative control.

Specificity & Comments

CD25 is the alpha chain of the IL-2 receptor. It is a Type I transmembrane protein present on activated T-cells, activated B-cells, some thymocytes, myeloid precursors, and oligodendrocytes that associates with CD122 to form a heterodimer that can act as a high-affinity receptor for IL-2. It is expressed in most B-cell neoplasms, some Acute Non-lymphocytic Leukemias, and Neuroblastomas. Expression of CD25 is a reliable diagnostic tool for distinguishing neoplastic mast-cell aggregates from reactive proliferations, and has, therefore, recently become a minor criterion for the diagnosis of Systemic Mastocytosis (SM). Anti-CD25 antibodies have also been useful in identifying mast cells in skin biopsies in the setting of Urticaria Pigmentosa, which is predictive of Systemic Mastocytosis. Quantitation of regulatory T-cells (Treg) in the setting of hepatocellular carcinoma has been used as an independent predictive factor for tumor recurrence after hepatic resection for HCC. Also, the percentage of tumor-infiltrating CD25+FOXP3+regulatory T-cells among tumor cells, inside tumor parenchyma and at its periphery are significantly higher in recurrent Cutaneous Melanoma than in Non-recurrent Melanoma.

Limitations and Warranty

This antibody is available for research use only and is not approved for diagnosis. There are no warranties, expressed or implied, which extend beyond this description. Company is not liable for any personal injury or economic loss resulting from this product.

Supplied As

200ug/ml of Ab purified from Bioreactor Concentrate by Protein A/G. Prepared in 10mM PBS with 0.05% BSA & 0.05% azide. Also available WITHOUT BSA & azide at 1.0mg/ml.

Storage and Stability

Antibody with azide - store at 2 to 8°C. Antibody without azide - store at -20 to -80°C. Antibody is stable for 24 months. Non-hazardous. No MSDS required.

Research Areas

AKT Signaling, B Cell Markers, Cardiovascular, Cytokine Signaling, Hematopoietic Stem Cells, Immune checkpoint, Immunology, Mast Cell Marker, Signal Transduction, Transcription Factors