

## Recombinant CD200 Receptor 1 (CD200R1) / OX2 Antibody

Rabbit Monoclonal Antibody [Clone CD200R1/9919R]

Catalog No	Format	Size
131450-RBM16-P0	Purified Ab with BSA and Azide at 200ug/ml	20 ug
131450-RBM16-P1	Purified Ab with BSA and Azide at 200ug/ml	100 ug
131450-RBM16-P1ABX	Purified Ab WITHOUT BSA and Azide at 1.0mg/ml	100 ug

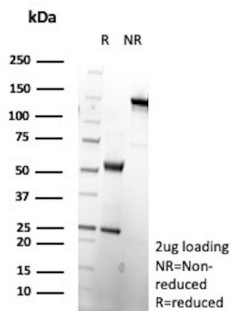
Applications	Tested Dillution	Note
Immunohistochemistry (IHC)	1-2ug/ml	30 min at RT. Staining of formalin-fixed tissues requires heating tissue sections in 10mM Tris with 1mM EDTA, pH 9.0, for 45 min at 95°C followed by cooling at RT for 20 minutes
Western Blot (WB)	2-4ug/ml	

### Product Details

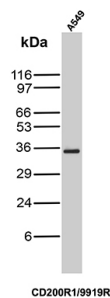
<b>Clone</b>	CD200R1/9919R
<b>Gene Name</b>	CD200R1
<b>Immunogen</b>	Recombinant fragment (around aa50-250) of human CD200R1 protein (exact sequence is proprietary)
<b>Host</b>	Rabbit
<b>Clonality</b>	Monoclonal
<b>Isotype / Light Chain</b>	IgG / Kappa
<b>Mol. Weight of Antigen</b>	39kDa
<b>Cellular Localization</b>	Cell membrane
<b>Species Reactivity</b>	Human
<b>Positive Control</b>	Human spleen, tonsil, lymph node or kidney. Daudi or U937 cells. A549

\*Optimal dilution for a specific application should be determined.

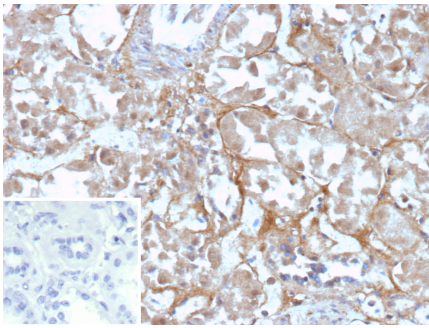
### Product Images for Recombinant CD200 Receptor 1 (CD200R1) / OX2 Antibody



SDS-PAGE Analysis of Purified CD200R1 Recombinant Rabbit Monoclonal Antibody (CD200R1/9919R). Confirmation of Purity and Integrity of Antibody.



Western blot analysis of A549 cell lysate using CD200R1 Recombinant Rabbit Monoclonal Antibody (CD200R1/9919R).



Formalin-fixed, paraffin-embedded human renal cell carcinoma stained with CD200R1 Recombinant Rabbit Monoclonal Antibody (CD200R1/9919R). Inset: PBS instead of primary antibody; secondary only negative control.

---

### Specificity & Comments

OX2 (CD200, MOX2), a member of the immunoglobulin superfamily (IgSF), is a 248 residue cell surface glycoprotein that is expressed in lymphoid cells, neurons and endothelium. OX2 receptor (OX2R) is a membrane protein with up to 70% of its weight derived from N-linked glycosylation; it is primarily expressed in lymphoid and neuronal tissue. Phylogenetic analysis of OX2R with respect to other leukocyte IgSF glycoproteins suggests that OXR2 and OX2 share a common ancestral protein. The cytoplasmic portion of OX2R contains NPXY motifs that are known to interact with PTB/PID binding domains. The interaction between OX2 and OX2R may contribute to pathways that suppress and limit macrophage induced inflammatory damage in tissue.

---

### Limitations and Warranty

This antibody is available for research use only and is not approved for use in diagnosis. There are no warranties, expressed or implied, which extend beyond this description. Company is not liable for any personal injury or economic loss resulting from this product.

---

### Supplied As

200ug/ml of Ab purified from Bioreactor Concentrate by Protein A/G. Prepared in 10mM PBS with 0.05% BSA & 0.05% azide. Also available WITHOUT BSA & azide at 1.0mg/ml.

---

### Storage and Stability

Antibody with azide - store at 2 to 8 °C. Antibody without azide - store at -20 to -80 °C. Antibody is stable for 24 months. Non-hazardous. No MSDS required.

---

### Research Areas

Immuno Oncology, Immunology, Infectious Disease

---