

Recombinant CD10 (Membrane Metalloendopeptidase) Antibody

Mouse Monoclonal Antibody [Clone 56C6]

Catalog No	Format	Size
4311-MSM54-P0	Purified Ab with BSA and Azide at 200ug/ml	20 ug
4311-MSM54-P1	Purified Ab with BSA and Azide at 200ug/ml	100 ug
4311-MSM54-P1ABX	Purified Ab WITHOUT BSA or Azide at 1.0mg/ml	100 ug

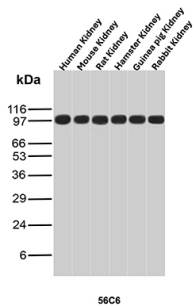
Applications	Tested Dillution	Note

Product Details

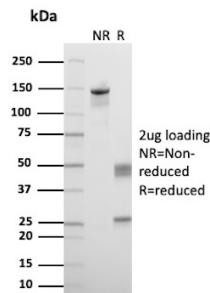
Clone	56C6
Immunogen	Recombinant full-length human CD10 protein
Host	Mouse
Clonality	Monoclonal
Isotype / Light Chain	IgG1 / Kappa
Mol. Weight of Antigen	85.51kDa
Cellular Localization	Cell membrane
Species Reactivity	Guinea Pig, Hamster, Human, Mouse, Rabbit, Rat
Positive Control	Tonsil, small intestine or kidney.

*Optimal dilution for a specific application should be determined.

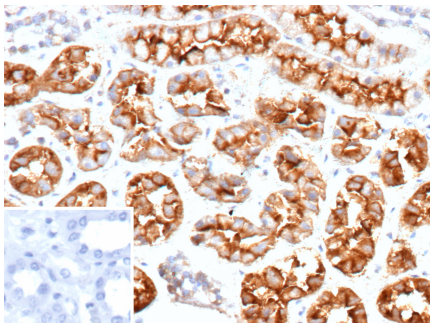
Product Images for Recombinant CD10 (Membrane Metalloendopeptidase) Antibody



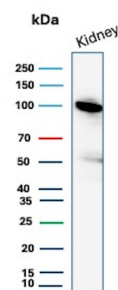
Western Blot Analysis of Human Kidney, Mouse Kidney, Rat Kidney, Hamster Kidney, Guinea pig Kidney and Rabbit Kidney tissue lysates using CD10 Mouse Monoclonal Antibody (56C6).



SDS-PAGE Analysis of Purified CD10 Recombinant Mouse Monoclonal Antibody (56C6). Confirmation of Purity and Integrity of Antibody.



Formalin-fixed, paraffin-embedded human kidney stained with CD10 Mouse Monoclonal Antibody (56C6). Inset: PBS instead of primary antibody; secondary only negative control.



Western Blot Analysis of human kidney lysate using CD10 Mouse Monoclonal Antibody (56C6).

Specificity & Comments

Recognizes a 100kDa glycoprotein, identified as CD10, also known as Common Acute Lymphocytic Leukemia Antigen (CALLA). It is a cell surface enzyme with neutral metalloendopeptidase activity, which inactivates a variety of biologically active peptides. CD10 is expressed on the cells of lymphoblastic, Burkitt's, and follicular germinal center lymphomas, and on cells from patients with chronic myelocytic leukemia (CML). It is also expressed on the surface of normal early lymphoid progenitor cells, immature B cells within adult bone marrow and germinal center B cells within lymphoid tissue. CD10 is also present on breast myoepithelial cells, bile canaliculi, fibroblasts, with especially high expression on the brush border of kidney and gut epithelial cells.

Limitations and Warranty

This antibody is available for research use only and is not approved for use in diagnosis. There are no warranties, expressed or implied, which extend beyond this description. Company is not liable for any personal injury or economic loss resulting from this product.

Supplied As

200ug/ml of Ab purified from Bioreactor Concentrate by Protein G. Prepared in 10mM PBS with 0.05% BSA & 0.05% azide. Also available WITHOUT BSA & azide at 1.0mg/ml.

Storage and Stability

Antibody with azide - store at 2 to 8 °C. Antibody without azide - store at -20 to -80 °C. Antibody is stable for 24 months. Non-hazardous. No MSDS required.
