

## CYP2C9 / Cytochrome P450 family 2 subfamily C member 9 Antibody

Mouse Monoclonal Antibody [Clone CYP2C9/13122]

Catalog No	Format	Size
1559-MSM2-P0	Purified Ab with BSA and Azide at 200ug/ml	20 ug
1559-MSM2-P1	Purified Ab with BSA and Azide at 200ug/ml	100 ug
1559-MSM2-P1ABX	Purified Ab WITHOUT BSA and Azide at 1.0mg/ml	100 ug

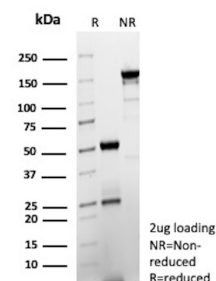
Applications	Tested Dillution	Note
Immunohistochemistry (IHC)	1-2ug/ml	30 min at RT. Staining of formalin-fixed tissues requires heating tissue sections in 10mM Tris with 1mM EDTA, pH 9.0, for 45 min at 95°C followed by cooling at RT for 20 minutes

### Product Details

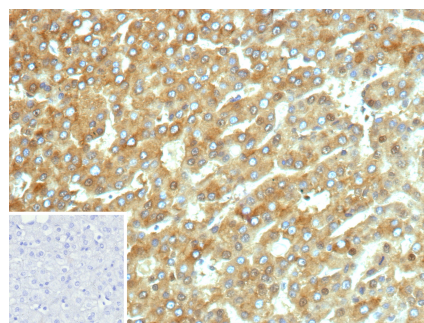
<b>Clone</b>	CYP2C9/13122
<b>Gene Name</b>	CYP2C9
<b>Immunogen</b>	Recombinant fragment (around aa1-200) of human CYP2C9 protein (exact sequence is proprietary)
<b>Host</b>	Mouse
<b>Clonality</b>	Monoclonal
<b>Isotype / Light Chain</b>	IgG2b / Kappa
<b>Mol. Weight of Antigen</b>	55kDa
<b>Cellular Localization</b>	Cytoplasm, Endoplasmic reticulum, Microsome membrane
<b>Species Reactivity</b>	Human
<b>Positive Control</b>	Human liver or hepatocellular carcinoma.

\*Optimal dilution for a specific application should be determined.

### Product Images for CYP2C9 / Cytochrome P450 family 2 subfamily C member 9 Antibody



SDS-PAGE Analysis of Purified CYP2C9 Mouse Monoclonal Antibody (CYP2C9/13122). Confirmation of Purity and Integrity of Antibody.



Formalin-fixed, paraffin-embedded human hepatocellular carcinoma (HCC) stained with CYP2C9 Mouse Monoclonal Antibody (CYP2C9/13122). Inset: PBS instead of primary antibody; secondary only negative control.

### Specificity & Comments

This gene encodes a member of the cytochrome P450 superfamily of enzymes. The cytochrome P450 proteins are monooxygenases which catalyze many reactions involved in drug metabolism and synthesis of cholesterol, steroids and other lipids. This protein localizes to the endoplasmic reticulum and its expression is induced by rifampin. The enzyme is known to metabolize many xenobiotics, including phenytoin, tolbutamide, ibuprofen and S-warfarin. Studies identifying individuals who are poor metabolizers of phenytoin and tolbutamide suggest that this gene is polymorphic. The gene is located within a cluster of cytochrome P450 genes on chromosome 10q24.

### Supplied As

200ug/ml of Ab purified from Bioreactor Concentrate by Protein A/G. Prepared in 10mM PBS with 0.05% BSA & 0.05% azide. Also available WITHOUT BSA & azide at 1.0mg/ml.

### Storage and Stability

Antibody with azide - store at 2 to 8°C. Antibody without azide - store at -20 to -80°C. Antibody is stable for 24 months. Non-hazardous. No MSDS required.

### Research Areas

Metabolism

## Limitations and Warranty

This antibody is available for research use only and is not approved for use in diagnosis. There are no warranties, expressed or implied, which extend beyond this description. Company is not liable for any personal injury or economic loss resulting from this product.

---