

## Recombinant Parvalbumin / PVALB Antibody

Mouse Monoclonal Antibody [Clone r2E11]

Catalog No	Format	Size
5816-MSM42-P0	Purified Ab with BSA and Azide at 200ug/ml	20 ug
5816-MSM42-P1	Purified Ab with BSA and Azide at 200ug/ml	100 ug
5816-MSM42-P1ABX	Purified Ab WITHOUT BSA and Azide at 1.0mg/ml	100 ug

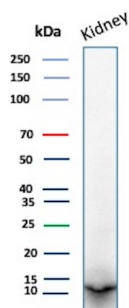
Applications	Tested Dillution	Note
Immunohistochemistry (IHC)	1-2ug/ml	30 min at RT. Staining of formalin-fixed tissues requires heating tissue sections in 10mM Tris with 1mM EDTA, pH 9.0, for 45 min at 95°C followed by cooling at RT for 20 minutes
Western Blot (WB)	2-4ug/ml	

### Product Details

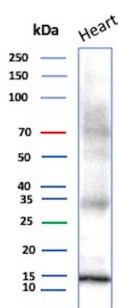
<b>Clone</b>	r2E11
<b>Gene Name</b>	PVALB
<b>Immunogen</b>	Prokaryotic recombinant fusion protein corresponding to the majority of the parvalbumin alpha molecule
<b>Host</b>	Mouse
<b>Clonality</b>	Monoclonal
<b>Isotype / Light Chain</b>	IgG1 / Kappa
<b>Mol. Weight of Antigen</b>	12kDa
<b>Cellular Localization</b>	Cell junction, Cytoplasm, Nucleus
<b>Species Reactivity</b>	Human
<b>Positive Control</b>	Human brain, heart or kidney.

\*Optimal dilution for a specific application should be determined.

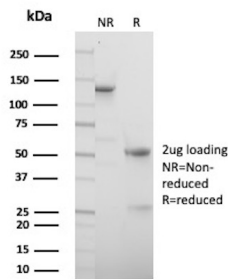
### Product Images for Recombinant Parvalbumin / PVALB Antibody



Western blot analysis of human kidney tissue lysate using Parvalbumin Recombinant Mouse Monoclonal Antibody (r2E11).



Western blot analysis of human heart tissue lysate using Parvalbumin Recombinant Mouse Monoclonal Antibody (r2E11).



SDS-PAGE Analysis of Purified Parvalbumin Alpha Recombinant Mouse Monoclonal Antibody (r2E11). Confirmation of Purity and Integrity of Antibody.

### Specificity & Comments

Alpha and beta parvalbumins are low molecular weight, water-soluble, calcium binding proteins. Alpha and beta parvalbumins are expressed in different human tissues, with the alpha form detected strongly in extracts of human cerebellum and weakly in kidney, but not in skeletal muscle, thymus, lung, placenta, heart, liver and diaphragm. The beta form of parvalbumin has been detected only in preterm placenta. Within the cerebellum, alpha parvalbumin is highly localized to Purkinje, basket, stellate and Golgi cells. Reacts with human parvalbumin alpha. Does NOT detect beta parvalbumin in pre-term placenta.

### Supplied As

200ug/ml of Ab purified from Bioreactor Concentrate by Protein A/G. Prepared in 10mM PBS with 0.05% BSA & 0.05% azide. Also available WITHOUT BSA & azide at 1.0mg/ml.

### Storage and Stability

Antibody with azide - store at 2 to 8°C. Antibody without azide - store at -20 to -80°C. Antibody is stable for 24 months. Non-hazardous. No MSDS required.

### Research Areas

Neuroscience

### Limitations and Warranty

This antibody is available for research use only and is not approved for use in diagnosis. There are no warranties, expressed or implied, which extend beyond this description. Company is not liable for any personal injury or economic loss resulting from this product.