

Recombinant SPARC / Osteonectin Antibody

Mouse Monoclonal Antibody [Clone rOSTN/13279]

Catalog No	Format	Size
6678-MSM20-P0	Purified Ab with BSA and Azide at 200ug/ml	20 ug
6678-MSM20-P1	Purified Ab with BSA and Azide at 200ug/ml	100 ug
6678-MSM20-P1ABX	Purified Ab WITHOUT BSA or Azide at 1.0mg/ml	100 ug

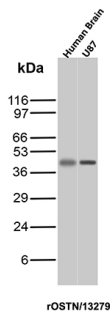
Applications	Tested Dillution	Note
Immunohistochemistry (IHC)	1-2ug/ml	30 min at RT. Staining of formalin-fixed tissues requires heating tissue sections in 10mM Tris with 1mM EDTA, pH 9.0, for 45 min at 95°C followed by cooling at RT for 20 minutes
Western Blot (WB)	2-4ug/ml	

Product Details

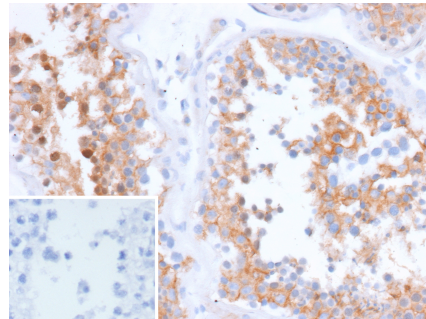
Clone	rOSTN/13279
Immunogen	Recombinant fragment corresponding to the c-terminal region of the human Osteonectin (O-Nectin) protein
Host	Mouse
Clonality	Monoclonal
Isotype / Light Chain	IgG1 / Kappa
Mol. Weight of Antigen	34.63kDa
Cellular Localization	Basement membrane, Extracellular matrix, Extracellular space, Secreted
Species Reactivity	Human
Positive Control	Human placenta, lymph node or spleen. JEG3, A-375 or A549 cell lysates.

*Optimal dilution for a specific application should be determined.

Product Images for Recombinant SPARC / Osteonectin Antibody



Western blot analysis of Human Brain and U87 lysates using SPARC / Osteonectin Recombinant Mouse Monoclonal Antibody (r15G12).



Formalin-fixed, paraffin-embedded human testis stained with SPARC / Osteonectin Recombinant Mouse Monoclonal Antibody (r15G12). Inset: PBS instead of primary antibody; secondary only negative control.

Specificity & Comments

Osteonectin (ON), also known as BM-40 or SPARC (secreted protein, acidic and rich in cysteine) is a multifunctional glycoprotein (32.5 kD) involved with tissue mineralization as well as extracellular matrix modelling. It is the most abundant glycoprotein secreted by human osteoblasts in developing bone and odontoblasts of developing teeth. ON mRNA and protein have been detected in non-mineralized tissues such as steroid-producing cells of the adrenal glands, suprabasal layers of the epidermis, glomeruli in the kidney, bronchi of the lung, megakaryocytes and large vessels. This organ-specific distribution in non-mineralized tissues suggests a role during human development.

Supplied As

200ug/ml of Ab produced in a mammalian-based expression system. Prepared in 10mM PBS with 0.05% BSA & 0.05% azide. Also available WITHOUT BSA & azide at 1.0mg/ml.

Storage and Stability

Antibody with azide - store at 2 to 8 °C. Antibody without azide - store at -20 to -80 °C. Antibody is stable for 24 months. Non-hazardous. No MSDS required.

Limitations and Warranty

This antibody is available for research use only and is not approved for use in diagnosis. There are no warranties, expressed or implied, which extend beyond this description. Company is not liable for any personal injury or economic loss resulting from this product.
