

CEACAM1 (CEA Cell Adhesion Molecule 1) / CD66a Antibody

Mouse Monoclonal Antibody [Clone CEACAM1/12665]

Catalog No	Format	Size
634-MSM45-P0	Purified Ab with BSA and Azide at 200ug/ml	20 ug
634-MSM45-P1	Purified Ab with BSA and Azide at 200ug/ml	100 ug
634-MSM45-P1ABX	Purified Ab WITHOUT BSA and Azide at 1.0mg/ml	100 ug

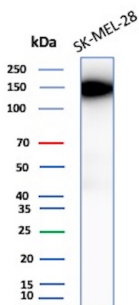
Applications	Tested Dillution	Note
Immunohistochemistry (IHC)	1-2ug/ml	30 min at RT. Staining of formalin-fixed tissues requires heating tissue sections in 10mM Tris with 1mM EDTA, pH 9.0, for 45 min at 95°C followed by cooling at RT for 20 minutes
Western Blot (WB)	2-4ug/ml	

Product Details

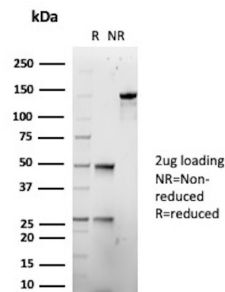
Clone	CEACAM1/12665
Gene Name	CEACAM1
Immunogen	Recombinant fragment (around aa 1-200) of human CEACAM1 protein (exact sequence is proprietary)
Host	Mouse
Clonality	Monoclonal
Isotype / Light Chain	IgG1 / Kappa
Mol. Weight of Antigen	90-180kDa
Cellular Localization	Cell membrane, Secreted
Species Reactivity	Human
Positive Control	Human colon, liver, endometrium or hepatic carcinoma tissues. SK-MEL-28 cells.

*Optimal dilution for a specific application should be determined.

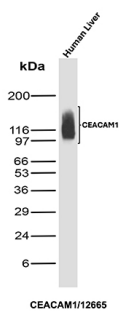
Product Images for CEACAM1 (CEA Cell Adhesion Molecule 1) / CD66a Antibody



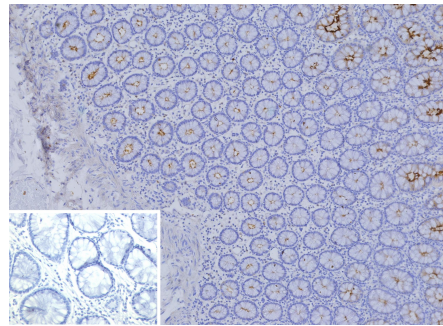
Western Blot Analysis of SK-MEL-28 lysate using CEACAM1 Mouse Monoclonal Antibody (CEACAM1/12665).



SDS-PAGE Analysis of Purified CEACAM1 Mouse Monoclonal Antibody (CEACAM1/12665). Confirmation of Purity and Integrity of Antibody.



Western Blot Analysis of Human liver tissue lysate using CEACAM1 Mouse Monoclonal Antibody (CEACAM1/12665).



Formalin-fixed, paraffin-embedded human colon stained with CEACAM1 Mouse Monoclonal Antibody (CEACAM1/12665). Inset: PBS instead of primary antibody; secondary only negative control.

Specificity & Comments

Carcinoembryonic antigen (CEA) is one of the most commonly used tumor markers in serum immunoassay determinations of carcinoma. Members of the CEACAM (carcinoembryonic antigen-related cell adhesion molecule) family contain a single N domain, with structural homology to the immunoglobulin variable domains, followed by a variable number of immunoglobulin constantlike A and/or B domains. CEACAM1 (carcinoembryonic antigen-related cell adhesion molecule 1), also known as BGP or BGP1, is a 526 amino acid protein that exists as seven alternatively spliced isoforms, some of which localize to the cell membranes, while others are secreted. One of several members of the CEACAM family, CEACAM1 contains one Ig-like V-type domain and three Ig-like C2-type domains and is thought to play a role in a variety of cellular activities, including angiogenesis, apoptosis, arrangement of tissue threedimensional structure and modulation of innate and adaptive immune responses. Additionally, CEACAM1 is underexpressed in colorectal cancers, suggesting a role in tumor suppression.

Limitations and Warranty

This antibody is available for research use only and is not approved for use in diagnosis. There are no warranties, expressed or implied, which extend beyond this description. Company is not liable for any personal injury or economic loss resulting from this product.

Supplied As

200ug/ml of Ab purified from Bioreactor Concentrate by Protein A/G. Prepared in 10mM PBS with 0.05% BSA & 0.05% azide. Also available WITHOUT BSA & azide at 1.0mg/ml.

Storage and Stability

Antibody with azide - store at 2 to 8°C. Antibody without azide - store at -20 to -80°C. Antibody is stable for 24 months. Non-hazardous. No MSDS required.

Research Areas

Hematopoietic Stem Cells, Immunology