

## Recombinant Calretinin / Calbindin 2 (Mesothelioma Marker) Antibody

Rabbit Monoclonal Antibody [Clone CALB2/4688R]

Catalog No	Format	Size
794-RBM8-P0	Purified Ab with BSA and Azide at 200ug/ml	20 ug
794-RBM8-P1	Purified Ab with BSA and Azide at 200ug/ml	100 ug
794-RBM8-P1ABX	Purified Ab WITHOUT BSA and Azide at 1.0mg/ml	100 ug

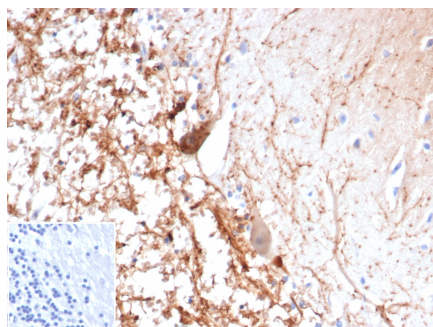
Applications	Tested Dillution	Note
Immunohistochemistry (IHC)	1-2ug/ml	30 min at RT. Staining of formalin-fixed tissues requires heating tissue sections in 10mM Tris with 1mM EDTA, pH 9.0, for 45 min at 95°C followed by cooling at RT for 20 minutes
Western Blot (WB)	2-4ug/ml	

### Product Details

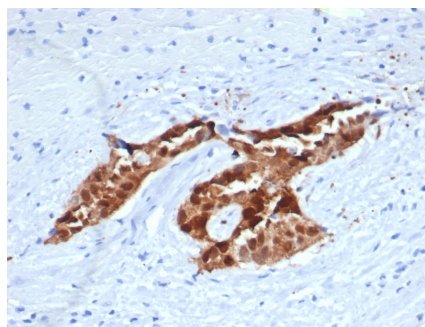
<b>Clone</b>	CALB2/4688R
<b>Gene Name</b>	CALB2
<b>Immunogen</b>	Recombinant human Calretinin (Calbindin 2) protein fragment (around aa1-250) (exact sequence is proprietary)
<b>Host</b>	Rabbit
<b>Clonality</b>	Monoclonal
<b>Isotype / Light Chain</b>	IgG / Kappa
<b>Mol. Weight of Antigen</b>	29kDa
<b>Cellular Localization</b>	Cytoplasm, Nucleus
<b>Species Reactivity</b>	Human
<b>Positive Control</b>	Human brain, testis or mesothelioma tissue.

*\*Optimal dilution for a specific application should be determined.*

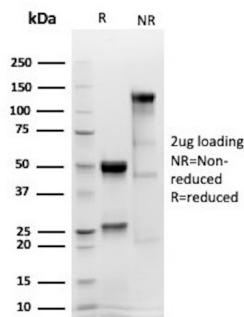
### Product Images for Recombinant Calretinin / Calbindin 2 (Mesothelioma Marker) Antibody



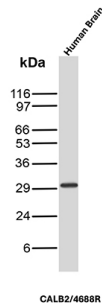
Formalin-fixed, paraffin-embedded human brain stained with Calretinin Recombinant Rabbit Monoclonal Antibody (CALB2/4688). Inset: PBS instead of primary antibody; secondary only negative control.



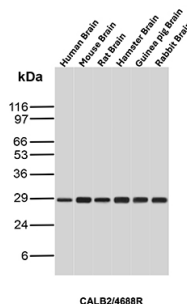
Formalin-fixed, paraffin-embedded human mesothelioma stained with Calretinin Recombinant Rabbit Monoclonal Antibody (CALB2/4688). Inset: PBS instead of primary antibody; secondary only negative control.



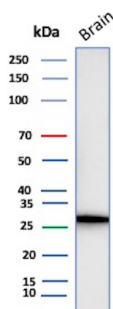
SDS-PAGE Analysis of Purified Calretinin Recombinant Rabbit Monoclonal Antibody (CALB2/4688). Confirmation of Purity and Integrity of Antibody.



Western blot analysis of human brain tissue lysate using Calretinin Recombinant Rabbit Monoclonal Antibody (CALB2/4688R).



Western blot analysis of brain tissue lysates of different species using Calretinin Recombinant Rabbit Monoclonal Antibody (CALB2/4688R).



Western blot analysis of human brain tissue lysate using Calretinin Recombinant Rabbit Monoclonal Antibody (CALB2/4688R).

## Specificity & Comments

It recognizes a protein of about 29kDa, which is identified as Calretinin (also known as Calbindin 2). Calretinin is a vitamin D-dependent calcium-binding protein involved in calcium signaling. It is present in subsets of neurons throughout the brain and spinal chord, including sensory ganglia. Antibody to calretinin is useful in differentiating mesothelioma from adenocarcinomas of the lung. It also aids in differentiating adrenal cortical neoplasms from pheochromocytomas.

## Supplied As

200ug/ml of Ab purified from rabbit anti-serum by Protein A. Prepared in 10mM PBS with 0.05% BSA & 0.05% azide. Also available WITHOUT BSA at 1.0mg/ml.

## Storage and Stability

Antibody with azide - store at 2 to 8 °C. Antibody without azide - store at -20 to -80 °C. Antibody is stable for 24 months. Non-hazardous. No MSDS required.

## Research Areas

Neuroscience

## Limitations and Warranty

This antibody is available for research use only and is not approved for use in diagnosis. There are no warranties, expressed or implied, which extend beyond this description. Company is not liable for any personal injury or economic loss resulting from this product.