

## CELA3A / Chymotrypsin like elastase 3A Antibody

Mouse Monoclonal Antibody [Clone CELA3A/12553]

| Catalog No       | Format  | Size   |
|------------------|---|--------|
| 10136-MSM3-P0    | Purified Ab with BSA and Azide at 200ug/ml    | 20 ug  |
| 10136-MSM3-P1    | Purified Ab with BSA and Azide at 200ug/ml    | 100 ug |
| 10136-MSM3-P1ABX | Purified Ab WITHOUT BSA and Azide at 1.0mg/ml | 100 ug |

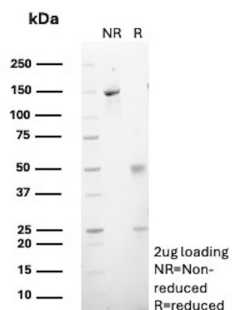
| Applications               | Tested Dillution | Note  |
|----------------------------|------------------|---|
| Immunohistochemistry (IHC) | 1-2ug/ml         | 30 min at RT. Staining of formalin-fixed tissues requires heating tissue sections in 10mM Tris with 1mM EDTA, pH 9.0, for 45 min at 95°C followed by cooling at RT for 20 minutes |
| Western Blot (WB)          | 2-4ug/ml         |   |

### Product Details

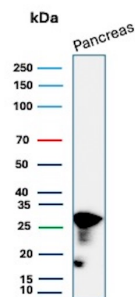
|                               |  |
|-------------------------------|--|
| <b>Clone</b>                  | CELA3A/12553   |
| <b>Gene Name</b>              | CELA3A   |
| <b>Immunogen</b>              | Recombinant fragment (around aa50-250) of human CELA3A protein (exact sequence is proprietary) |
| <b>Host</b>                   | Mouse  |
| <b>Clonality</b>              | Monoclonal   |
| <b>Isotype / Light Chain</b>  | IgG1 / Kappa   |
| <b>Mol. Weight of Antigen</b> | 29kDa  |
| <b>Cellular Localization</b>  | Cytoplasm, Extracellular space   |
| <b>Species Reactivity</b>     | Human  |
| <b>Positive Control</b>       | Human pancreas or pancreatic cancer.   |

\*Optimal dilution for a specific application should be determined.

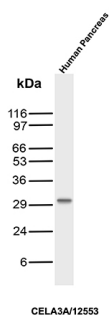
### Product Images for CELA3A / Chymotrypsin like elastase 3A Antibody



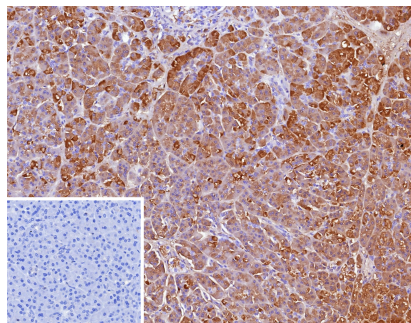
SDS-PAGE Analysis of Purified CELA3A Mouse Monoclonal Antibody (CELA3A/12553). Confirmation of Purity and Integrity of Antibody.



Western Blot Analysis of human pancreas tissue lysate using CELA3A Mouse Monoclonal Antibody (CELA3A/12553).



Western Blot Analysis of human pancreas tissue lysate using CELA3A Mouse Monoclonal Antibody (CELA3A/12553).



Formalin-fixed, paraffin-embedded human pancreas stained with CELA3A Mouse Monoclonal Antibody (CELA3A/12553). Inset: PBS instead of primary antibody; secondary only negative control.

### Specificity & Comments

Elastases belong to a subfamily of serine proteases that function to catalytically hydrolyze a wide variety of proteins. Elastase-3A, also known as ELA3A or ELA3, is a 270 amino acid protein that belongs to the elastase family and acts as an alanine-specific protease. Secreted as a zymogen from the pancreas, Elastase-3A functions as a digestive enzyme in the intestine that participates in metabolic degradation pathways by preferentially cleaving proteins that have alanine residues. In addition, Elastase-3A is thought to play a role in the metabolism and transport of cholesterol molecules in the intestine. Altered expression of Elastase-3A may be associated with pancreatic ductal carcinoma, a highly fatal cancer of the pancreatic ducts

### Limitations and Warranty

This antibody is available for research use only and is not approved for use in diagnosis. There are no warranties, expressed or implied, which extend beyond this description. Company is not liable for any personal injury or economic loss resulting from this product.

### Supplied As

200ug/ml of Ab purified from Bioreactor Concentrate by Protein A/G. Prepared in 10mM PBS with 0.05% BSA & 0.05% azide. Also available WITHOUT BSA & azide at 1.0mg/ml.

### Storage and Stability

Antibody with azide - store at 2 to 8 °C. Antibody without azide - store at -20 to -80 °C. Antibody is stable for 24 months. Non-hazardous. No MSDS required.