

PHPT1 Antibody

Mouse Monoclonal Antibody [Clone PHPT1/12054]

| Catalog No | Format | Size |
|------------------|---|--------|
| 29085-MSM2-P0 | Purified Ab with BSA and Azide at 200ug/ml | 20 ug |
| 29085-MSM2-P1 | Purified Ab with BSA and Azide at 200ug/ml | 100 ug |
| 29085-MSM2-P1ABX | Purified Ab WITHOUT BSA and Azide at 1.0mg/ml | 100 ug |

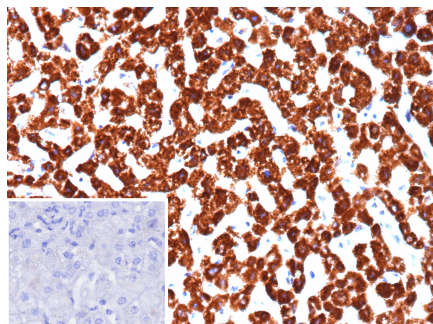
| Applications | Tested Dillution | Note |
|----------------------------|------------------|---|
| Immunohistochemistry (IHC) | 1-2ug/ml | 30 min at RT. Staining of formalin-fixed tissues requires heating tissue sections in 10mM Tris with 1mM EDTA, pH 9.0, for 45 min at 95°C followed by cooling at RT for 20 minutes |

Product Details

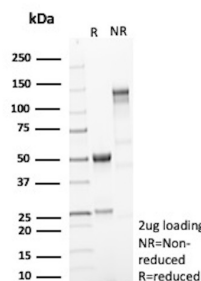
| | |
|------------------------|---|
| Clone | PHPT1/12054 |
| Gene Name | PHPT1 |
| Immunogen | Recombinant human PHPT1 protein |
| Host | Mouse |
| Clonality | Monoclonal |
| Isotype / Light Chain | IgG |
| Mol. Weight of Antigen | 14kDa |
| Cellular Localization | Cytoplasm |
| Species Reactivity | Human |
| Positive Control | Human heart, skeletal muscle or breast. |

**Optimal dilution for a specific application should be determined.*

Product Images for PHPT1 Antibody



Formalin-fixed, paraffin-embedded human hepatocellular carcinoma stained with PHPT1 Mouse Monoclonal Antibody (PHPT1/12054). Inset: PBS instead of primary antibody; secondary only negative control.



SDS-PAGE Analysis of Purified PHPT1 Mouse Monoclonal Antibody (PHPT1/12054). Confirmation of Purity and Integrity of Antibody.

Specificity & Comments

PHPT1 (phosphohistidine phosphatase 1), also known as 14 kDa phosphohistidine phosphatase, is a 125 amino acid enzyme belonging to the Janus protein family. Existing as a monomer in the cytoplasm, PHPT1 is an EDTAinsensitive phosphohistidine phosphatase. First identified in human adrenal gland, PHPT1 is highly expressed in skeletal muscle and heart, with lower expression in liver, pancreas and kidney. Overexpression of PHPT1 leads to specific phosphohistidine phosphatase activity towards phosphopeptide I, with no activity detected towards phosphotyrosine, phosphothreonine and phosphoserine peptides. PHPT1 is highly conserved among species, suggesting that it serves an essential functional role.

Supplied As

200ug/ml of Ab purified from Bioreactor Concentrate by Protein A/G. Prepared in 10mM PBS with 0.05% BSA & 0.05% azide. Also available WITHOUT BSA & azide at 1.0mg/ml.

Storage and Stability

Antibody with azide - store at 2 to 8°C. Antibody without azide - store at -20 to -80°C. Antibody is stable for 24 months. Non-hazardous. No MSDS required.

Limitations and Warranty

This antibody is available for research use only and is not approved for use in diagnosis. There are no warranties, expressed or implied, which extend beyond this description. Company is not liable for any personal injury or economic loss resulting from this product.
