

PHPT1 Antibody

Mouse Monoclonal Antibody [Clone PHPT1/12053]

Catalog No	Format	Size
29085-MSM1-P0	Purified Ab with BSA and Azide at 200ug/ml	20 ug
29085-MSM1-P1	Purified Ab with BSA and Azide at 200ug/ml	100 ug
29085-MSM1-P1ABX	Purified Ab WITHOUT BSA and Azide at 1.0mg/ml	100 ug

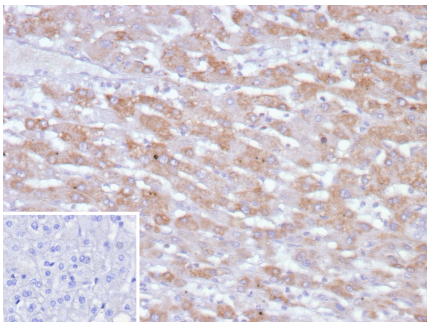
Applications	Tested Dillution	Note
Immunohistochemistry (IHC)	1-2ug/ml	30 min at RT. Staining of formalin-fixed tissues requires heating tissue sections in 10mM Tris with 1mM EDTA, pH 9.0, for 45 min at 95°C followed by cooling at RT for 20 minutes

Product Details

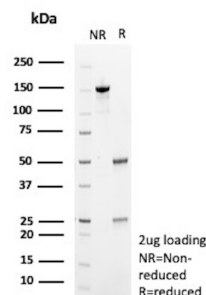
Clone	PHPT1/12053
Gene Name	PHPT1
Immunogen	Recombinant human PHPT1 protein
Host	Mouse
Clonality	Monoclonal
Isotype / Light Chain	IgG
Mol. Weight of Antigen	14kDa
Cellular Localization	Cytoplasm
Species Reactivity	Human
Positive Control	Human heart, skeletal muscle or breast.

*Optimal dilution for a specific application should be determined.

Product Images for PHPT1 Antibody



Formalin-fixed, paraffin-embedded human hepatocellular carcinoma stained with PHPT1 Mouse Monoclonal Antibody (PHPT1/12053). Inset: PBS instead of primary antibody; secondary only negative control.



SDS-PAGE Analysis of Purified PHPT1 Mouse Monoclonal Antibody (PHPT1/12053). Confirmation of Purity and Integrity of Antibody.

Specificity & Comments

PHPT1 (phosphohistidine phosphatase 1), also known as 14 kDa phosphohistidine phosphatase, is a 125 amino acid enzyme belonging to the Janus protein family. Existing as a monomer in the cytoplasm, PHPT1 is an EDTAinsensitive phosphohistidine phosphatase. First identified in human adrenal gland, PHPT1 is highly expressed in skeletal muscle and heart, with lower expression in liver, pancreas and kidney. Overexpression of PHPT1 leads to specific phosphohistidine phosphatase activity towards phosphopeptide I, with no activity detected towards phosphotyrosine, phosphothreonine and phosphoserine peptides. PHPT1 is highly conserved among species, suggesting that it ~~corves an essential functional role.~~

Supplied As

200ug/ml of Ab purified from Bioreactor Concentrate by Protein A/G. Prepared in 10mM PBS with 0.05% BSA & 0.05% azide. Also available WITHOUT BSA & azide at 1.0mg/ml.

Storage and Stability

Antibody with azide - store at 2 to 8°C. Antibody without azide - store at -20 to -80°C. Antibody is stable for 24 months. Non-hazardous. No MSDS required.

Limitations and Warranty

This antibody is available for research use only and is not approved for use in diagnosis. There are no warranties, expressed or implied, which extend beyond this description. Company is not liable for any personal injury or economic loss resulting from this product.
