

## MUC13 / Mucin 13 Antibody

Mouse Monoclonal Antibody [Clone MUC13/13112]

Catalog No	Format	Size
56667-MSM2-P0	Purified Ab with BSA and Azide at 200ug/ml	20 ug
56667-MSM2-P1	Purified Ab with BSA and Azide at 200ug/ml	100 ug
56667-MSM2-P1ABX	Purified Ab WITHOUT BSA and Azide at 1.0mg/ml	100 ug

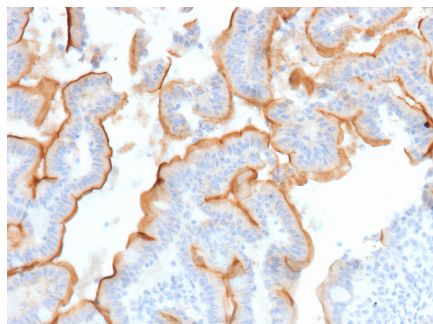
Applications	Tested Dillution	Note
Immunohistochemistry (IHC)	1-2ug/ml	30 min at RT. Staining of formalin-fixed tissues requires heating tissue sections in 10mM Tris with 1mM EDTA, pH 9.0, for 45 min at 95°C followed by cooling at RT for 20 minutes

### Product Details

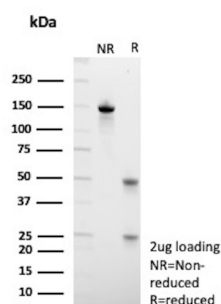
Clone	MUC13/13112
Gene Name	MUC13
Immunogen	Recombinant fragment (around aa100-300) of human MUC13 protein (exact sequence is proprietary)
Host	Mouse
Clonality	Monoclonal
Isotype / Light Chain	IgG1 / Kappa
Mol. Weight of Antigen	58kDa
Cellular Localization	Cell membrane
Species Reactivity	Human
Positive Control	Human colon or small intestine.

*\*Optimal dilution for a specific application should be determined.*

### Product Images for MUC13 / Mucin 13 Antibody



Formalin-fixed, paraffin-embedded human small intestine stained with Mucin 13 (MUC13) Mouse Monoclonal Antibody (MUC13/13112). HIER: Tris/EDTA, pH9.0, 45min. 2°: HRP-polymer, 30min. DAB, 5min.



SDS-PAGE Analysis Purified MUC13 Mouse Monoclonal Antibody (MUC13/13112). Confirmation of Purity and Integrity of Antibody.

### Specificity & Comments

Mucins are epithelial glycoproteins with a high content of clustered oligosaccharides that are O-glycoside linked to tandem repeat peptides rich in threonine, serine and proline. Mucin 13 (MUC13), also designated downregulated in colon cancer 1 (DRCC1), is an epithelial and hemopoietic type I membrane protein that undergoes secretion and influences gastrointestinal mucosa levels. It is most abundant in epithelial tissues of the gastrointestinal and respiratory tracts, such as large intestine and trachea, followed by kidney, small intestine, appendix and stomach. Mucin 13 is a good differentiation marker for gastrointestinal mucosa and may also indicate certain gastric tumors. It localizes to the apical membrane of both columnar and goblet cells in the gastrointestinal tract, and within goblet cell thecae. Mucin 13 is a cleaved protein, and the b subunit, containing the cytoplasmic tail, can homodimerize.

---

### Limitations and Warranty

This antibody is available for research use only and is not approved for use in diagnosis. There are no warranties, expressed or implied, which extend beyond this description. Company is not liable for any personal injury or economic loss resulting from this product.

---

### Supplied As

200ug/ml of Ab purified from Bioreactor Concentrate by Protein A/G. Prepared in 10mM PBS with 0.05% BSA & 0.05% azide. Also available WITHOUT BSA & azide at 1.0mg/ml.

---

### Storage and Stability

Antibody with azide - store at 2 to 8°C. Antibody without azide - store at -20 to -80°C. Antibody is stable for 24 months. Non-hazardous. No MSDS required.

---