

Recombinant BRCA1 (Breast Marker) Antibody

Rabbit Monoclonal Antibody [Clone BRCA1/13502R]

Catalog No	Format	Size
672-RBM9-P0	Purified Ab with BSA and Azide at 200ug/ml	20 ug
672-RBM9-P1	Purified Ab with BSA and Azide at 200ug/ml	100 ug
672-RBM9-P1ABX	Purified Ab WITHOUT BSA and Azide at 1.0mg/ml	100 ug

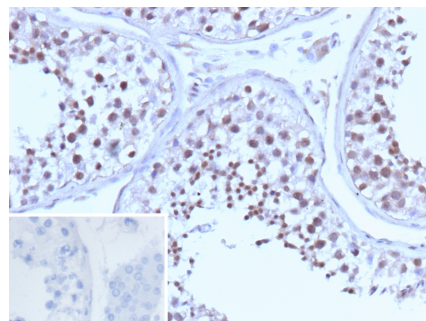
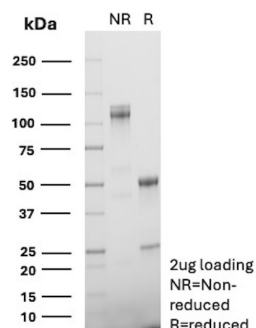
Applications	Tested Dillution	Note
Immunohistochemistry (IHC)	1-2ug/ml	30 min at RT. Staining of formalin-fixed tissues requires heating tissue sections in 10mM Tris with 1mM EDTA, pH 9.0, for 45 min at 95°C followed by cooling at RT for 20 minutes

Product Details

Clone	BRCA1/13502R
Gene Name	BRCA1
Immunogen	Recombinant fragment corresponding to the N-terminal region of human BRCA1 protein
Host	Rabbit
Clonality	Monoclonal
Isotype / Light Chain	IgG / Kappa
Mol. Weight of Antigen	220kDa
Cellular Localization	Chromosome, Cytoplasm, Nucleus
Species Reactivity	Human
Positive Control	MCF7 or A431 cells. Human breast, ovarian or renal cell carcinoma.

*Optimal dilution for a specific application should be determined.

Product Images for Recombinant BRCA1 (Breast Marker) Antibody



SDS-PAGE Analysis of Purified BRCA1 Recombinant Rabbit Monoclonal Antibody(BRCA1/13502R). Confirmation of Purity and Integrity of Antibody

Formalin-fixed, paraffin-embedded human testis stained with BRCA1 Recombinant Rabbit Monoclonal Antibody (BRCA1/13502R). Inset: PBS instead of primary antibody; secondary only negative control.

Specificity & Comments

This gene encodes a nuclear phosphoprotein that plays a role in maintaining genomic stability, and it also acts as a tumor suppressor. The encoded protein combines with other tumor suppressors, DNA damage sensors, and signal transducers to form a large multi-subunit protein complex known as the BRCA1-associated genome surveillance complex (BASC). This gene product associates with RNA polymerase II, and through the C-terminal domain, also interacts with histone deacetylase complexes. This protein thus plays a role in transcription, DNA repair of double-stranded breaks, and recombination. Mutations in this gene are responsible for approximately 40% of inherited breast cancers and more than 80% of inherited breast and ovarian cancers. Alternative splicing plays a role in modulating the subcellular localization and physiological function of this gene.

Limitations and Warranty

This antibody is available for research use only and is not approved for use in diagnosis. There are no warranties, expressed or implied, which extend beyond this description. Company is not liable for any personal injury or economic loss resulting from this product.

Supplied As

200ug/ml of Ab Purified from Bioreactor Concentrate by Protein A/G. Prepared in 10mM PBS with 0.05% BSA & 0.05% azide. Also available WITHOUT BSA & azide at 1.0mg/ml.

Storage and Stability

Antibody with azide - store at 2 to 8°C. Antibody without azide - store at -20 to -80°C. Antibody is stable for 24 months. Non-hazardous. No MSDS required.

Research Areas

Breast Cancer, Cardiovascular, Infectious Disease, Nuclear Marker, Transcription Factors
