

PAX8 (Renal Cell Marker) Antibody

Mouse Monoclonal Antibody [Clone PAX8/12570]

Catalog No	Format	Size
7849-MSM20-P0	Purified Ab with BSA and Azide at 200ug/ml	20 ug
7849-MSM20-P1	Purified Ab with BSA and Azide at 200ug/ml	100 ug
7849-MSM20-P1ABX	Purified Ab WITHOUT BSA and Azide at 1.0mg/ml	100 ug

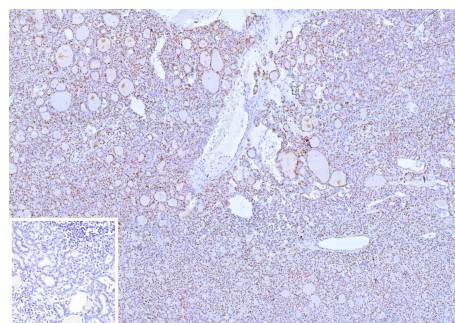
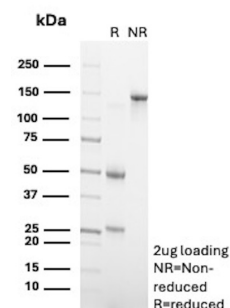
Applications	Tested Dillution	Note
Immunohistochemistry (IHC)	1-2ug/ml	30 min at RT. Staining of formalin-fixed tissues requires heating tissue sections in 10mM Tris with 1mM EDTA, pH 9.0, for 45 min at 95°C followed by cooling at RT for 20 minutes

Product Details

Clone	PAX8/12570
Gene Name	PAX8
Immunogen	Recombinant fragment (around aa50-300) of human PAX8 protein (exact sequence is proprietary)
Host	Mouse
Clonality	Monoclonal
Isotype / Light Chain	IgG1 / Kappa
Mol. Weight of Antigen	62kDa
Cellular Localization	Nucleus
Species Reactivity	Human
Positive Control	HeLa or Raji cells. Human renal cell carcinoma (RCC) or ovarian serous carcinoma.

**Optimal dilution for a specific application should be determined.*

Product Images for PAX8 (Renal Cell Marker) Antibody



SDS-PAGE Analysis of Purified PAX8 Mouse Monoclonal Antibody (PAX8/12570). Confirmation of Purity and Integrity of Antibody.

Formalin-fixed, paraffin-embedded human thyroid stained with PAX8 Mouse Monoclonal Antibody (PAX8/12570). Inset: PBS instead of primary antibody; secondary only negative control.

Specificity & Comments

Recognizes a protein of 62kDa, identified as PAX8. It is a member of the paired box (PAX) family of transcription factors. This nuclear protein is involved in thyroid follicular cell development and expression of thyroid-specific genes. Mutations in this gene have been associated with thyroid dysgenesis, thyroid follicular carcinomas, and atypical thyroid adenomas. PAX-8 is expressed in the thyroid (and associated carcinomas), non-ciliated mucosal cells of the fallopian tubes, and simple ovarian inclusion cysts, but not normal ovarian surface epithelial cells. PAX-8 is expressed in a high percentage of ovarian serous, endometrioid, and clear cell carcinomas, but only rarely in primary ovarian mucinous adenocarcinomas. PAX-8 expression is reported in renal tubules as well as renal cell carcinoma, nephroblastoma, and seminoma. PAX-8 antibody may be used as an additional immunohistochemical marker for renal epithelial tumors.

Limitations and Warranty

This antibody is available for research use only and is not approved for use in diagnosis. There are no warranties, expressed or implied, which extend beyond this description. Company is not liable for any personal injury or economic loss resulting from this product.

Supplied As

200ug/ml of Ab purified from Bioreactor Concentrate by Protein A/G. Prepared in 10mM PBS with 0.05% BSA & 0.05% azide. Also available WITHOUT BSA & azide at 1.0mg/ml.

Storage and Stability

Antibody with azide - store at 2 to 8 °C. Antibody without azide - store at -20 to -80 °C. Antibody is stable for 24 months. Non-hazardous. No MSDS required.

Research Areas

Developmental Biology, Kidney, Nuclear Marker, Transcription Factors