

## Recombinant HER-2 / c-erbB-2 / neu / CD340 Antibody

Rabbit Monoclonal Antibody [Clone ERBB2/13055R]

Catalog No	Format	Size
2064-RBM55-P0	Purified Ab with BSA and Azide at 200ug/ml	20 ug
2064-RBM55-P1	Purified Ab with BSA and Azide at 200ug/ml	100 ug
2064-RBM55-P1ABX	Purified Ab WITHOUT BSA and Azide at 1.0mg/ml	100 ug

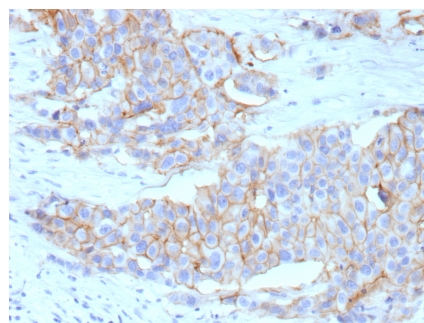
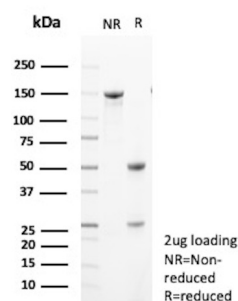
Applications	Tested Dillution	Note
Immunohistochemistry (IHC)	1-2ug/ml	30 min at RT. Staining of formalin-fixed tissues requires heating tissue sections in 10mM Tris with 1mM EDTA, pH 9.0, for 45 min at 95°C followed by cooling at RT for 20 minutes

### Product Details

Clone	ERBB2/13055R
Gene Name	ERBB2
Immunogen	Recombinant fragment of human ERBB2 corresponding to the extracellular domain (ECD) (exact sequence is proprietary)
Host	Rabbit
Clonality	Monoclonal
Isotype / Light Chain	IgG / Kappa
Mol. Weight of Antigen	185kDa
Cellular Localization	Cell membrane
Species Reactivity	Human
Positive Control	SKBR-3 cells. Human breast carcinoma tissue (IHC).

*\*Optimal dilution for a specific application should be determined.*

### Product Images for Recombinant HER-2 / c-erbB-2 / neu / CD340 Antibody



SDS-PAGE Analysis of Purified c-erbB-2 / HER-2 Recombinant Rabbit Monoclonal Antibody (ERBB2/13055R). Confirmation of Purity and Integrity of Antibody.

Formalin-fixed, paraffin-embedded human breast cancer stained with c-erbB-2 / HER-2 Recombinant Rabbit Monoclonal Antibody (ERBB2/13055R). Inset: PBS instead of primary antibody; secondary only negative control.

### Specificity & Comments

Recognizes a protein of 185kDa, which is identified as c-erbB-2/HER-2/neu. Its epitope is localized in the extracellular domain. C-erbB-2/HER-2 is a member of the EGFR family. This MAb is specific and shows minimal cross-reaction with other members of the EGFR-family. Receptors of this family are located on the plasma membrane and consist of an extracellular ligand-binding domain that is connected to a large intracellular domain by a single transmembrane sequence. c-erbB-2/HER-2 protein is over-expressed in a variety of carcinomas especially those of breast and ovary.

---

### Supplied As

200ug/ml of Ab purified from Bioreactor Concentrate by Protein A/G. Prepared in 10mM PBS with 0.05% BSA & 0.05% azide. Also available WITHOUT BSA & azide at 1.0mg/ml.

---

### Storage and Stability

Antibody with azide - store at 2 to 8°C. Antibody without azide - store at -20 to -80°C. Antibody is stable for 24 months. Non-hazardous. No MSDS required.

---

### Research Areas

Breast Cancer, Cardiovascular, Developmental Biology, AKT Signaling, Bladder Cancer, Infectious Disease, Signal Transduction, Transcription Factors

---

### Limitations and Warranty

This antibody is available for research use only and is not approved for use in diagnosis. There are no warranties, expressed or implied, which extend beyond this description. Company is not liable for any personal injury or economic loss resulting from this product.

---