

Recombinant E-Cadherin (CDH1) / CD324 (Intercellular Junction Marker) Antibody

Rabbit Monoclonal Antibody [Clone CDH1/13142R]

Catalog No	Format	Size
999-RBM43-P0	Purified Ab with BSA and Azide at 200ug/ml	20 ug
999-RBM43-P1	Purified Ab with BSA and Azide at 200ug/ml	100 ug
999-RBM43-P1ABX	Purified Ab WITHOUT BSA or Azide at 1.0mg/ml	100 ug

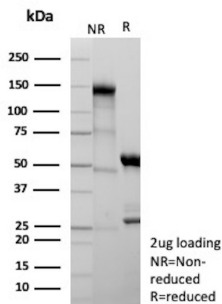
Applications	Tested Dillution	Note
--------------	------------------	------

Product Details

Clone	CDH1/13142R
Immunogen	Recombinant fragment corresponding to the extracellular domain of the human E-Cadherin (CDH1) protein
Host	Rabbit
Clonality	Monoclonal
Isotype / Light Chain	IgG / Kappa
Mol. Weight of Antigen	97.45kDa
Cellular Localization	Adherens junction, Cell junction, Cell membrane, Cytoplasm, Desmosome, Endosome, Golgi apparatus, trans-Golgi network
Species Reactivity	Human
Positive Control	Expressed in granuloma macrophages (at protein level) (PubMed:27760340)

*Optimal dilution for a specific application should be determined.

Product Images for Recombinant E-Cadherin (CDH1) / CD324 (Intercellular Junction Marker) Antibody



SDS-PAGE Analysis of Purified CDH1 Recombinant Rabbit Monoclonal Antibody (CDH1/13142R). Confirmation of Purity and Integrity of Antibody.

Specificity & Comments

Cadherins are calcium-dependent cell adhesion proteins (PubMed:11976333). They preferentially interact with themselves in a homophilic manner in connecting cells; cadherins may thus contribute to the sorting of heterogeneous cell types. CDH1 is involved in mechanisms regulating cell-cell adhesions, mobility and proliferation of epithelial cells (PubMed:11976333). Promotes organization of radial actin fiber structure and cellular response to contractile forces, via its interaction with AMOTL2 which facilitates anchoring of radial actin fibers to CDH1 junction complexes at the cell membrane (By similarity). Plays a role in the early stages of desmosome cell-cell junction formation via facilitating the recruitment of DSG2 and DSP to desmosome plaques (PubMed:29999492). Has a potent invasive suppressor role. It is a ligand for integrin alpha-E/beta-7., E-Cad/CTF2 promotes non-amyloidogenic degradation of Abeta precursors. Has a strong inhibitory effect on APP C99 and C83 production., (Microbial infection) Serves as a receptor for Listeria monocytogenes; internalin A (InIA) binds to this protein and promotes uptake of the bacteria.

Supplied As

200ug/ml of Ab produced in a mammalian-based expression system. Prepared in 10mM PBS with 0.05% BSA & 0.05% azide. Also available WITHOUT BSA & azide at 1.0mg/ml.

Storage and Stability

Antibody with azide - store at 2 to 8 °C. Antibody without azide - store at -20 to -80 °C. Antibody is stable for 24 months. Non-hazardous. No MSDS required.

Limitations and Warranty

This antibody is available for research use only and is not approved for use in diagnosis. There are no warranties, expressed or implied, which extend beyond this description. Company is not liable for any personal injury or economic loss resulting from this product.
