

Recombinant APC / Adenomatous Polyposis Coli / FAP (Tumor Suppressor) Antibody

Mouse Monoclonal Antibody [Clone rEMM43]

Catalog No	Format	Size
324-MSM4-P0	Purified Ab with BSA and Azide at 200ug/ml	20 ug
324-MSM4-P1	Purified Ab with BSA and Azide at 200ug/ml	100 ug
324-MSM4-P1ABX	Purified Ab WITHOUT BSA and Azide at 1.0mg/ml	100 ug

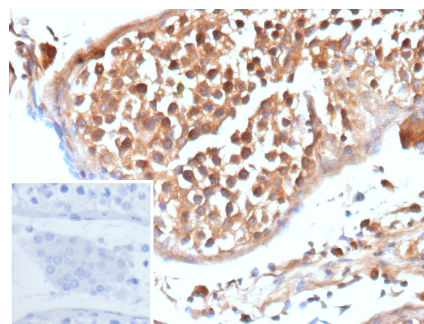
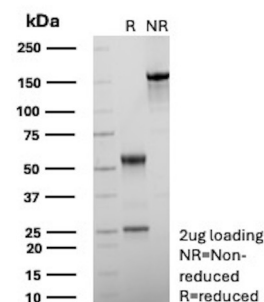
Applications	Tested Dillution	Note
Immunohistochemistry (IHC)	1-2ug/ml	30 min at RT. Staining of formalin-fixed tissues requires heating tissue sections in 10mM Tris with 1mM EDTA, pH 9.0, for 45 min at 95°C followed by cooling at RT for 20 minutes

Product Details

Clone	rEMM43
Gene Name	APC
Immunogen	Prokaryotic recombinant protein corresponding to a 251 amino acid region of the C-terminus of the human adenomatous polyposis coli protein
Host	Mouse
Clonality	Monoclonal
Isotype / Light Chain	IgG2b / Kappa
Mol. Weight of Antigen	66kDa
Cellular Localization	Adherens junction, Cell junction, Cell membrane, Cell projection, Cytoplasm, Cytoskeleton, Lamellipodium, Ruffle membrane
Species Reactivity	Human
Positive Control	Human tonsil, placenta, breast or colon. HCT116 or COLO 320DM cells.

*Optimal dilution for a specific application should be determined.

Product Images for Recombinant APC / Adenomatous Polyposis Coli / FAP (Tumor Suppressor) Antibody



SDS-PAGE Analysis of Purified APC Recombinant Mouse Monoclonal Antibody (rEMM43). Confirmation of Purity and Integrity of Antibody.

Formalin-fixed, paraffin-embedded human testis stained with APC Recombinant Mouse Monoclonal Antibody (rEMM43). Inset: PBS instead of primary antibody; secondary only negative control.

Specificity & Comments

The human adenomatous polyposis coli (APC) gene at locus 5q21 encodes a protein of 2,843 amino acids. The precise function of this 300 kD protein is not clear but it may have several functions including a role in cell proliferation, apoptosis, expression of cell adhesion proteins and modulation of cell to cell interactions. It is reported to be expressed in the cytoplasm of cell types of many lineages, both epithelial and mesenchymal. In the epithelium of bladder, small and large intestine, esophagus, stomach and epidermis, APC expression is restricted to regions in which cell replication has ceased and terminal differentiation has been established. Expression has been observed in lung, liver, kidney and mammary gland endothelial, myoepithelial and duct lining epithelial cells. Some tissues such as ovary, myometrium, thyroid, parathyroid and tonsil do not express the protein.

Limitations and Warranty

This antibody is available for research use only and is not approved for use in diagnosis. There are no warranties, expressed or implied, which extend beyond this description. Company is not liable for any personal injury or economic loss resulting from this product.

Supplied As

200ug/ml of Ab produced in CHO cell mammalian-based expression system. Prepared in 10mM PBS with 0.05% BSA & 0.05% azide. Also available WITHOUT BSA & azide at 1.0mg/ml.

Storage and Stability

Antibody with azide - store at 2 to 8°C. Antibody without azide - store at -20 to -80°C. Antibody is stable for 24 months. Non-hazardous. No MSDS required.

Research Areas

Apoptosis, Breast Cancer, Cardiovascular, Colon Cancer, Infectious Disease, Ovarian Cancer, Signal Transduction
